



LVH  
EXPERIENCES

# THE ALPS SKI GUIDE

THE ULTIMATE LUXURY SKI GUIDE

CURATORS OF IMMEASURABLE MOMENTS

[LVHGLOBAL.COM](http://LVHGLOBAL.COM)

# TABLE OF CONTENTS

## OVERVIEW

INTRODUCTION  
SERVICES  
MAP  
CHART

## AUSTRIA

LECH AM ARLBERG

## FRANCE

CHAMONIX  
COURCHEVEL  
MEGÈVE  
MÉRIBEL  
VAL D'ISERE  
VAL THORENS

## ITALY

CHAMOIS (AOSTA VALLEY)  
CORTINA D'AMPEZZO

## SWITZERLAND

CRANS-MONTANA  
GSTAAD  
ST. MORITZ  
VERBIER  
ZERMATT

LVH





## INTRODUCTION

LVH

The Alps—an enchanting mountain range spanning eight countries—offers a quintessential winter escape where luxury meets breathtaking beauty. Among its premier ski destinations are France's Chamonix and Courchevel, Italy's Cortina d'Ampezzo, Switzerland's St Moritz and Gstaad, and Austria's Lech am Arlberg. These locales combine old-world charm with modern sophistication, featuring opulent chalets, Michelin-starred dining, and vibrant après-ski scenes. LVH curates these alpine retreats, ensuring every moment is an unforgettable indulgence, from the first snowfall to the last exhilarating run.

### ELEVATE YOUR EXPERIENCE

Let LVH be your guide for an extraordinary escape that will leave you with unforgettable moments. We have curated a selection of the most exquisite places to dine, visit, marvel at, and have an adventure of a lifetime. Each category has been diamond-rated according to the tastes and preferences of like-minded adventurers. (See [CHART](#))





# SERVICES

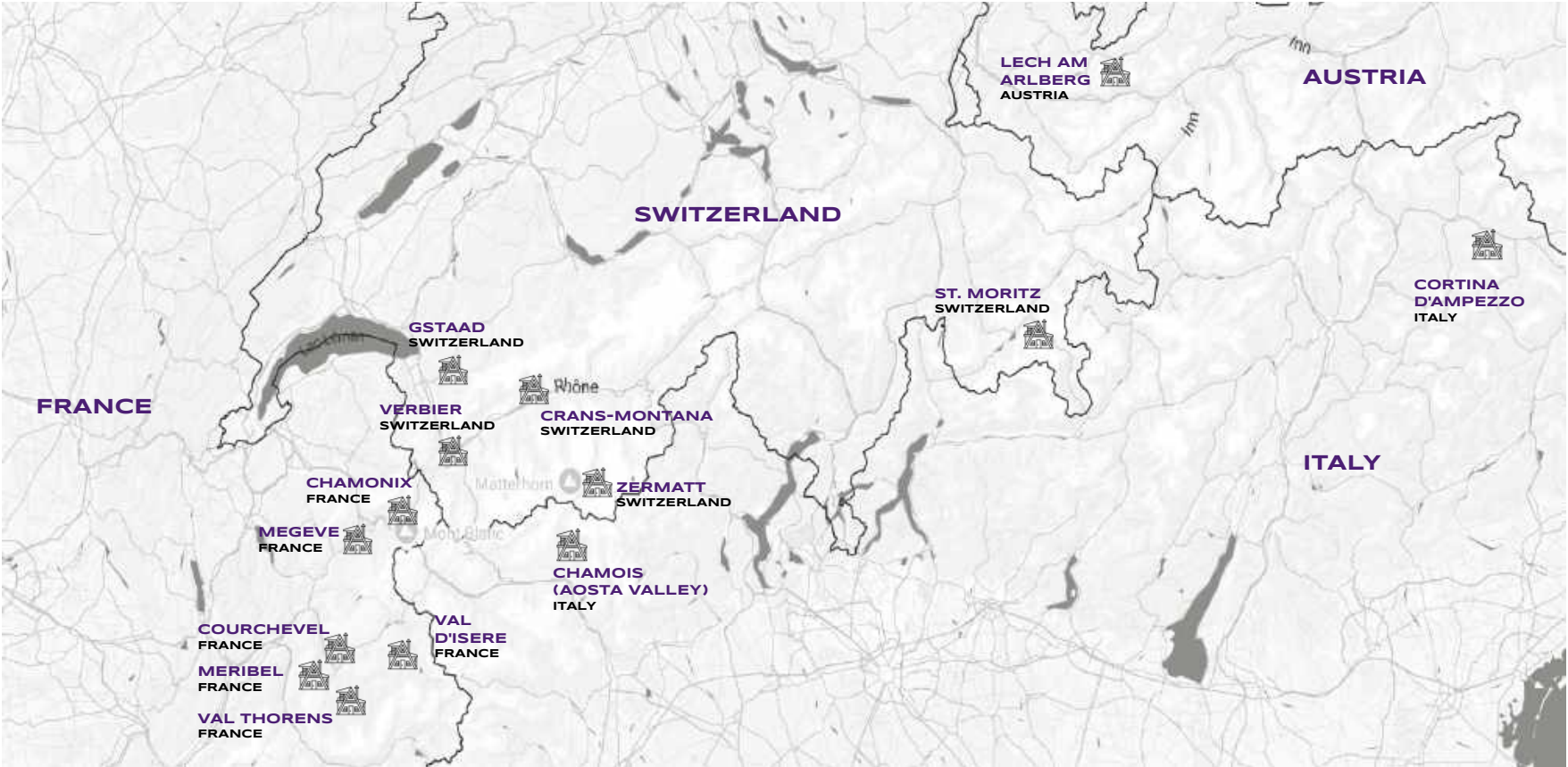
LVH

## INCLUDED SERVICES

- PRIVATE CHEF SERVICES
- CONCIERGE ACCESS
- STEWARD SERVICES
- HOUSEKEEPING SERVICES
- LUXURY SPA PRODUCTS
- WELCOME CEREMONY
- PRE-STOCKING

## ADDITIONAL SERVICES

- ADDITIONAL STAFF
- HOME STOCKING
- FLOWERS & DECORATION SERVICES
- SPA SERVICES
- SECURITY SERVICES
- PRIVATE JET & HELI CHARTER
- YACHTS CHARTER
- CAR TRANSFER & DISPOSAL
- CAR RENTAL
- COMMERCIAL AIR TICKETS
- HOTEL RESERVATIONS



# CHART | THE RESORT QUALITIES COMPARISON

	CHARM FACTOR	NON-SKIER S	SHORT TRANSFER	KID-FRIENDLY	SLOPES	APRÉS SKI	FINE DINING	NIGHTLIFE	SHOPPING	CULTURE	UNIQUE ACTIVITIES
LECH AM ARLBERG AUSTRIA	♥♥♥♥♥	♥♥♥♥♥	♥♥♥♥♥	♥♥♥♥♥	♥♥♥♥♥	♥♥♥♥♥	♥♥♥♥♥	♥♥♥♥♥	♥♥♥♥♥	♥♥♥♥♥	♥♥♥♥♥
CHAMONIX FRANCE	♥♥♥♥♥	♥♥♥♥♥	♥♥♥♥♥	♥♥♥♥♥	♥♥♥♥♥	♥♥♥♥♥	♥♥♥♥♥	♥♥♥♥♥	♥♥♥♥♥	♥♥♥♥♥	♥♥♥♥♥
COURCHEVEL FRANCE	♥♥♥♥♥	♥♥♥♥♥	♥♥♥♥♥	♥♥♥♥♥	♥♥♥♥♥	♥♥♥♥♥	♥♥♥♥♥	♥♥♥♥♥	♥♥♥♥♥	♥♥♥♥♥	♥♥♥♥♥
MEGÈVE FRANCE	♥♥♥♥♥	♥♥♥♥♥	♥♥♥♥♥	♥♥♥♥♥	♥♥♥♥♥	♥♥♥♥♥	♥♥♥♥♥	♥♥♥♥♥	♥♥♥♥♥	♥♥♥♥♥	♥♥♥♥♥
MARIBEL FRANCE	♥♥♥♥♥	♥♥♥♥♥	♥♥♥♥♥	♥♥♥♥♥	♥♥♥♥♥	♥♥♥♥♥	♥♥♥♥♥	♥♥♥♥♥	♥♥♥♥♥	♥♥♥♥♥	♥♥♥♥♥
VAL THORENS FRANCE	♥♥♥♥♥	♥♥♥♥♥	♥♥♥♥♥	♥♥♥♥♥	♥♥♥♥♥	♥♥♥♥♥	♥♥♥♥♥	♥♥♥♥♥	♥♥♥♥♥	♥♥♥♥♥	♥♥♥♥♥
VAL D'ISERE FRANCE	♥♥♥♥♥	♥♥♥♥♥	♥♥♥♥♥	♥♥♥♥♥	♥♥♥♥♥	♥♥♥♥♥	♥♥♥♥♥	♥♥♥♥♥	♥♥♥♥♥	♥♥♥♥♥	♥♥♥♥♥
CHAMOIS (AOSTA VALLEY) ITALY	♥♥♥♥♥	♥♥♥♥♥	♥♥♥♥♥	♥♥♥♥♥	♥♥♥♥♥	♥♥♥♥♥	♥♥♥♥♥	♥♥♥♥♥	♥♥♥♥♥	♥♥♥♥♥	♥♥♥♥♥
CORTINA D'AMPEZZO ITALY	♥♥♥♥♥	♥♥♥♥♥	♥♥♥♥♥	♥♥♥♥♥	♥♥♥♥♥	♥♥♥♥♥	♥♥♥♥♥	♥♥♥♥♥	♥♥♥♥♥	♥♥♥♥♥	♥♥♥♥♥
CRANS-MONTANA SWITZERLAND	♥♥♥♥♥	♥♥♥♥♥	♥♥♥♥♥	♥♥♥♥♥	♥♥♥♥♥	♥♥♥♥♥	♥♥♥♥♥	♥♥♥♥♥	♥♥♥♥♥	♥♥♥♥♥	♥♥♥♥♥
GSTAAD SWITZERLAND	♥♥♥♥♥	♥♥♥♥♥	♥♥♥♥♥	♥♥♥♥♥	♥♥♥♥♥	♥♥♥♥♥	♥♥♥♥♥	♥♥♥♥♥	♥♥♥♥♥	♥♥♥♥♥	♥♥♥♥♥
ST. MORITZ SWITZERLAND	♥♥♥♥♥	♥♥♥♥♥	♥♥♥♥♥	♥♥♥♥♥	♥♥♥♥♥	♥♥♥♥♥	♥♥♥♥♥	♥♥♥♥♥	♥♥♥♥♥	♥♥♥♥♥	♥♥♥♥♥
VERBIER SWITZERLAND	♥♥♥♥♥	♥♥♥♥♥	♥♥♥♥♥	♥♥♥♥♥	♥♥♥♥♥	♥♥♥♥♥	♥♥♥♥♥	♥♥♥♥♥	♥♥♥♥♥	♥♥♥♥♥	♥♥♥♥♥
ZERMATT SWITZERLAND	♥♥♥♥♥	♥♥♥♥♥	♥♥♥♥♥	♥♥♥♥♥	♥♥♥♥♥	♥♥♥♥♥	♥♥♥♥♥	♥♥♥♥♥	♥♥♥♥♥	♥♥♥♥♥	♥♥♥♥♥



LVH

# LECH AM ARLBERG

## AUSTRIA



TABLE OF CONTENTS

Lech ski resort in Austria is a top destination for both the rich and famous and regular ski enthusiasts, located in the snow-abundant Ski Arlberg region. Known for its exceptional skiing conditions, Lech offers a blend of traditional charm and modern sophistication. The resort features an efficient lift system, a largely intermediate piste network, and excellent off-piste terrain, making it ideal for skiers of all levels. Unique experiences such as horse-drawn sleigh rides in the Zug valley and a vibrant nightlife, including live jazz at the Fux Jazz bar, enhance the appeal of this cosmopolitan town.

AIRPORTS

INTERNATIONAL COMMERCIAL  
PRIVATE

Innsbruck Airport (INN/LOWI) 90 km  
Innsbruck Airport FBO (INN/LOWI) 90 km

RESORT QUALITIES

CHARM FACTOR	♥♥♥♥♥♥♥♥
NON-SKIER	♥♥♥♥♥♥♥♥
RESORT LAYOUT	♥♥♥♥♥♥♥♥
SHORT TRANSFER	♥♥♥♥♥♥♥♥
KID-FRIENDLY	♥♥♥♥♥♥♥♥
SLOPES	♥♥♥♥♥♥♥♥
APRÈS SKI	♥♥♥♥♥♥♥♥
FINE DINING	♥♥♥♥♥♥♥♥
NIGHTLIFE	♥♥♥♥♥♥♥♥
SHOPPING	♥♥♥♥♥♥♥♥
CULTURE	♥♥♥♥♥♥♥♥
UNIQUE ACTIVITIES	♥♥♥♥♥♥♥♥

PROS

- Traditional Austrian ski resort and culture
- The longest Alps ski run 85 km "Run of Fame"
- Picturesque landscapes
- Sophisticated and serene atmosphere
- State-of-the art lift system
- Facilities & terrain for everyone
- Fashionable with nobility and socialites

CONS

- Limited nightlife options
- Busy on sunny days, especially on-piste
- Less lively après scene than St Anton, but more than Zürs





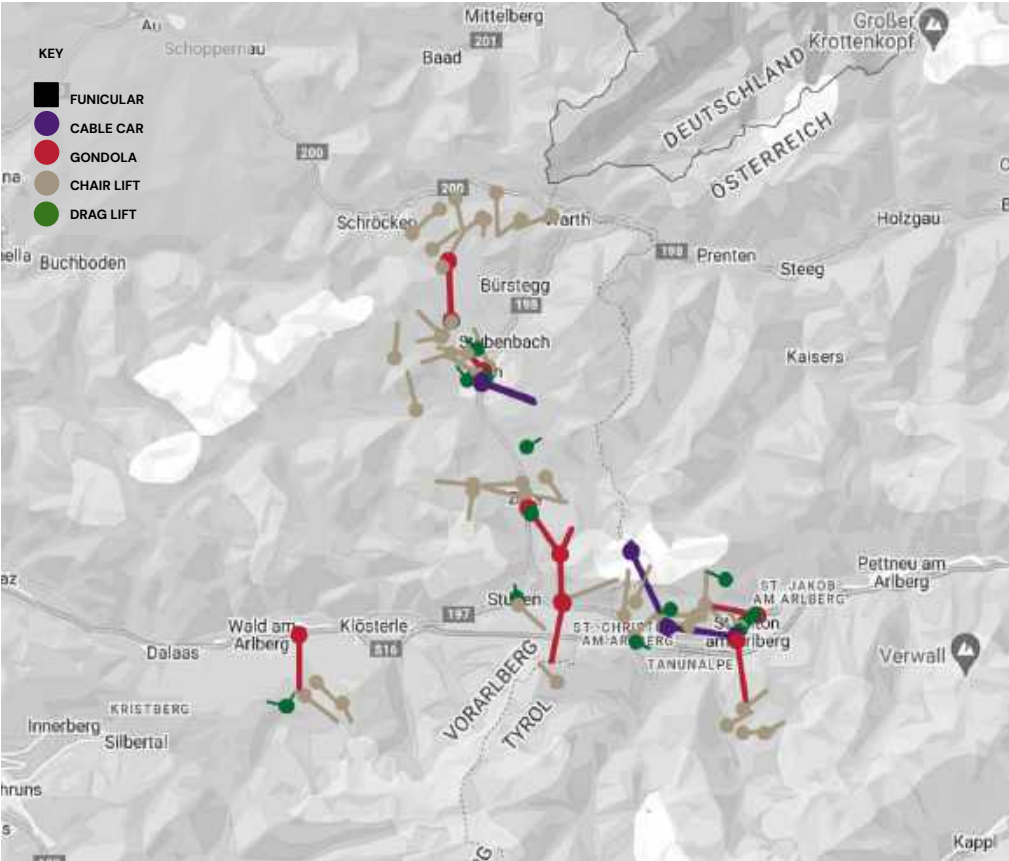
Ski Arlberg, Austria's premier winter destination, features outstanding resorts like St Anton, Lech, Zürs, and Warth-Schroecken. The impressive lift system, including gondolas connecting key areas, enhances accessibility and enjoyment of skiing. With Ski Arlberg lift passes, explore diverse slopes and the nearby Sonn, all set in Lech's sunny, ideal conditions. Don't miss "The White Ring" ski circuit, linking Lech, Zürs, Zug and Oberlech for a memorable alpine adventure.

SUMMARY

Length of Runs	305 km
Total Skiable Terrain	200 km
Longest Run	10 km
Elevation	1,450m – 2,811m
Average Snowfall	7 to 11 metres
Snow Conditions	👑👑👑👑👑

LEVEL OF SKIING

Beginners	👑👑👑👑👑
Intermediate	👑👑👑👑👑
Advanced	👑👑👑👑👑
Experts	👑👑👑👑👑
Extreme	👑👑👑👑👑
Off-Piste	👑👑👑👑👑
Tree-Skiing	👑👑👑👑👑
Ski Area Overall	👑👑👑👑👑





## ZURS

- Exclusive and intimate village
- Convenient lift access
- Interconnected skiing with Stuben, St Christoph and St Anton
- Renowned for exceptional off-piste freeride terrain and high-quality snow conditions above 1,750m
- Excellent for intermediates and advanced skiers
- Lift-accessed backcountry terrain



## LECH

- Prestigious ski destination, attracting the rich and famous
- Part of Ski Arlberg, one of Austria's snowiest regions
- Blend of traditional Austrian charm with modern luxury facilities
- Suitable for beginners and intermediates
- Lift-accessed backcountry terrain
- Features the Alps' longest ski circuit—the 85 km 'Run of Fame'



## ST. ATHON

- Extensive off-piste terrain and deep, consistent snowpack
- Combines a charming Austrian village atmosphere with vibrant après-ski nightlife.
- Offers varied on-piste trails suitable for all levels,
- Advanced terrain includes challenging chutes near the Valluga summit
- Includes the 'Run of Fame' tour for intermediates



## WARTH SCHRÖCKEN

- One of Europe's snowiest regions with an average of 10–11m annual snowfall
- Interlinked with Ski Arlberg
- Known for its wide, well-groomed runs and accessible freeride terrain
- Offers 65 km of groomed trails and diverse freeride opportunities
- Exceptional lift infrastructure connecting to Lech
- Less crowded



## ON THE SLOPES

- Alpine Skiing
- Snowboarding
- Free Ride
- Snowkite



## IN THE RESORT

- Dog Sledding
- Snowmobiling
- Snowshoeing
- Tobogganing
- Curling
- Ski Mountaineering
- Luxury Spas
- Fat Bikes
- Ice Skating
- Indoor Free Climbing
- Bowling
- Sports Park Lech
- Bob Run



## DESTINATION EXCLUSIVE

- Archery For Kids
- Indoor Golf Course
- Lech Shooting Range
- Small Bore Shooting (Summer)





## APRÉS SKI

- Day Spa At The Post
- Schlegelkopf Restaurant/Bar
- Arlberg Spa
- Pfefferkörndl Skilounge



## FINE DINING

- Severin's | Modern
- Rote Wand Chef's Table | Modern, International
- Griggeler Stubai | Contemporary Alpine
- Aurelio's | Traditional, International
- The Hotel Montana Restaurant | French



## NIGHTLIFE

- Café, Bar & Pub Pfefferkörndl
- The Cottage At The Hotel Tannbergerhof
- K.Club
- Bar At Hotel Arlberg Lech
- Berghof Bar/Lounge



## SHOPPING

- Strolz
- Vinotheque At Hotel Pfefferkorn
- Huber Fine Watches & Jewellery
- Sagmeister



## CULTURE

- Tyrolean Lech Nature Park
- Skyspace Lech
- Huber Hus In Lech
- Artwalk
- Cultural Walks And Guided Tours



OBERLECH, LECH AM ARLBERG



9 GUEST SUITES



22 GUESTS



Bar, Cinema Room, Fitness Room, Hammam, Pool Indoor, Sauna, Spa Lounge, Wine Cellar, Jacuzzi Outdoor, Ski In/Ski Out



Chalet Arula 1 is an outstanding luxury ski lodge immersed in the spellbinding majesty of the Austrian Alps. Witness glorious mountain vistas that inspire awe and wonder from the comfort of the wondrous interiors with a unique fusion of Alpine authenticity and speakeasy seduction wrapped in aged timber.

[VIEW MORE](#)

**WEEKLY STAY**

**Starting at €260,000**

*Exclusive of Fees*

LVH

# CHAMONIX FRANCE

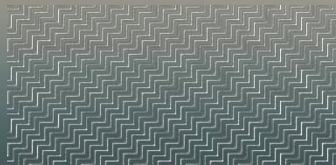


TABLE OF CONTENTS



Chamonix sits at the foot of the highest mountain in Western Europe, 4,810m Mont Blanc. It serves as a playground for extreme sports enthusiasts. Between ice climbing, paragliding and extreme skiing—it has been described as "the death-sport capital of the world!" Renowned for stunning scenery and dramatic landscapes, it is home to the world's highest ski lift, leading to the iconic Vallee Blanche, an off-piste trail through picturesque glacial terrain. Beyond skiing, visitors can enjoy a vibrant après-ski scene with numerous upscale restaurants and bars, making it a dynamic and enticing ski destination.

AIRPORTS

INTERNATIONAL COMMERCIAL	Geneve (GVA/LSGG)	108 km
PRIVATE	Megève Airport (LFHM /MVV)	41 km



RESORT QUALITIES

CHARM FACTOR	♥♥♥♥♥
NON-SKIER	♥♥♥♥♥
RESORT LAYOUT	♥♥♥♥♥
SHORT TRANSFER	♥♥♥♥♥
KID-FRIENDLY	♥♥♥♥♥
SLOPES	♥♥♥♥♥
APRÈS SKI	♥♥♥♥♥
FINE DINING	♥♥♥♥♥
NIGHTLIFE	♥♥♥♥♥
SHOPPING	♥♥♥♥♥
CULTURE	♥♥♥♥♥
UNIQUE ACTIVITIES	♥♥♥♥♥

PROS

- Numerous après ski opportunities
- Stunning landscapes
- Vibrant nightlife
- World's most extreme ski lift & terrain
- Chamonix & all the surrounding villages are lively, real towns not just resorts
- Excellent après ski and restaurants

CONS

- Ski areas spread across a wide area (but are connected by train & free bus)
- Transport between ski areas can be extremely busy during peak times
- Valley elevation is low and often lacks snow



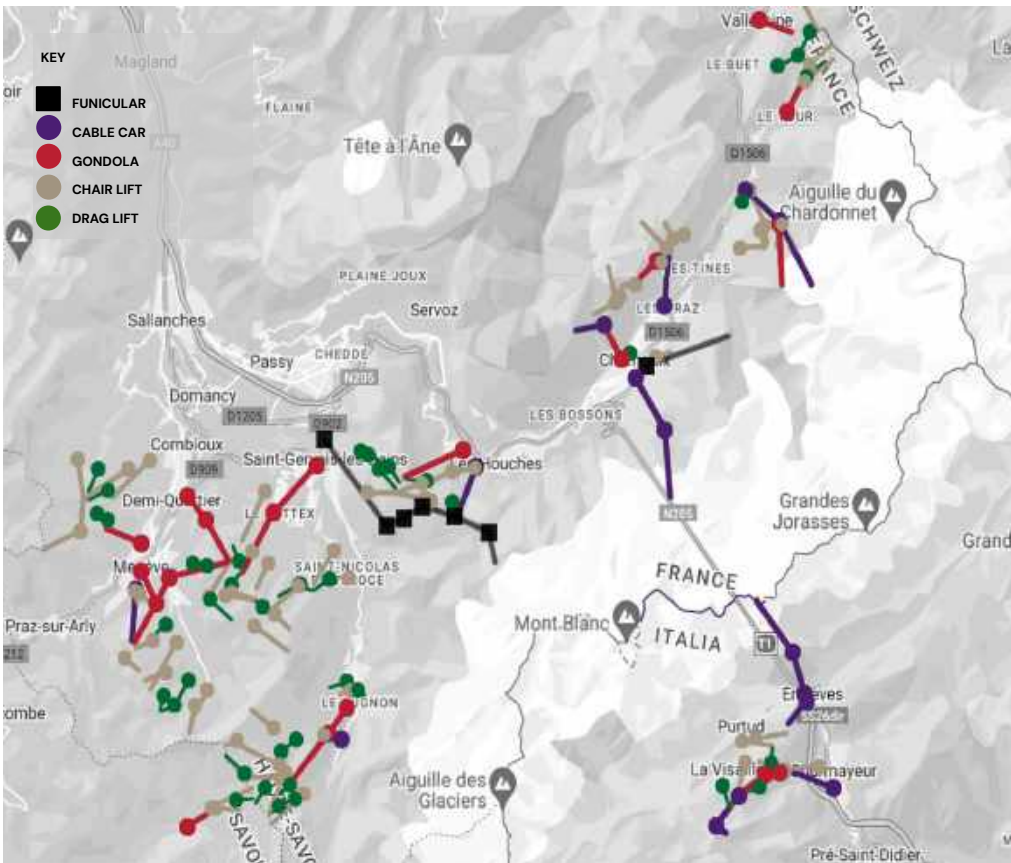
The Chamonix Valley, surrounded by Europe's highest glacial peaks, offers four main ski resorts: Grands Montets, Balme-Tour-Vallorcine, Brévent-Flégère, and Les Houches. Grands Montets is renowned for its steep off-piste trails suited for experts, while Brévent-Flégère provides diverse, sunlit slopes with stunning Mont Blanc views. It is a skier's paradise, featuring over 60 lifts and high-altitude terrain above 1,900 meters, with a ski season stretching from mid-November to early May.

**SUMMARY**

Length of Runs	170 km
Total Skiable Terrain	6km (Brevent)
Longest Run	22km (Vallee Blanche)
Elevation	1,035m - 3,840m (2,840m)
Average Snowfall	6 to 14 metres
Snow Conditions	♥♥♥♥♥

**LEVEL OF SKIING**

Beginners	♥♥♥♥♥
Intermediate	♥♥♥♥♥
Advanced	♥♥♥♥♥
Experts	♥♥♥♥♥
Extreme	♥♥♥♥♥
Off-Piste	♥♥♥♥♥
Tree-Skiing	♥♥♥♥♥
Ski Area Overall	♥♥♥♥♥





## BALME TOUR VALLORCINE

- The most mellow ski resort in the Chamonix area
- Located above the villages of Le Tour (3 km from Argentière) and Vallorcine, near the Swiss border
- Best suited for beginner and intermediate skiers with no advanced trails
- Enjoyable freeride powder on the shaded north side, including tree runs
- An excellent valley trail into Le Tour for added skiing enjoyment



## GRANDS MONTETS

- Located 8km up the valley near the village of Argentière
- Known for its huge vertical drop and exceptional snow quality
- Primarily caters to advanced skiers with abundant steep off-piste terrain
- A fire in September 2018 destroyed the cable cars; replacements are expected for the 2026/7 season
- Current lift access is non-existent to some of the best freeride terrain.



## LES HOUCHES

- Long, scenic descents with views of Mont Blanc and the Chamonix valley
- Known for its family-friendly environment, it provides extensive trails for beginners and intermediates, with a 900m skiable vertical.
- The lowest elevation resort in Chamonix
- Limited advanced terrain and aging lifts
- Relaxed, less crowded option with a charming village atmosphere



## BRÉVENT FLÉGÈRE

- Located above Chamonix
- Spectacular views of the Mont Blanc massif
- Wide range of on-piste and off-piste terrain
- 60 km of piste trails, the most in the Chamonix valley
- Excellent après ski opportunities
- Sensational non-ski activities
- Reliable snowfall record





## ON THE SLOPES

- Skiing
- Snowboarding
- Free Ride
- Heliskiing & Heliboarding (in bordering Switzerland & Italy)
- Extreme Skiing
- Eight Glaciers – Two Skiable:
  - The Vallée Blanche Glacier Skiing & Off-Piste Skiing
  - Glacier du Geant



## IN THE RESORT

- Cross-Country Skiing
- Tobogganing
- Paragliding
- Ice Climbing
- Snowshoeing
- Helicopter Tours
- Dog Sledding
- Luxury Spas



## DESTINATION EXCLUSIVE

- The Mer de Glace Adventures
- The Ice Cave,
- The Montanvers Train
- The Panoramique Mer de Glace
- Picturesque Cable Car Rides
- Les Planards – Ski Area / Amusement Park
- The Merlet Animal Park
- The Cham Mini Wolves Program – Activities For Kids



## APRÈS SKI

- Les Caves
- The Terrace At La Folie
- Douce Hotels
- Chambre Neuf
- Pointe Isabelle
- Brev'bar



## FINE DINING

- Albert 1er 1\* Michelin | Modern
- Atmosphère | Traditional
- Akashon | Modern
- Matafan | Modern
- Auberge Du Bois Prin | Modern, Traditional



## NIGHTLIFE

- L'alibi
- Le Club 1969
- Quartz Bar
- Bar At Le Refuge Des Aiglons
- The Janssen Cocktail Club



## SHOPPING

- Moncler
- Eric Bompard
- La Maison Ogier
- Vin Sur Vin
- Fromagerie



## CULTURE

- Crystal Museum – Tairraz Centre
- Mario Colonel Gallery
- The Aiguilles Rouges Nature Reserves
- Montenvers – Mer De Glace
- Aiguille Du Midi



CHAMONIX, CHAMONIX



13 GUEST SUITES



26 GUESTS



Fireplace, Fitness Room, Library, Massage Room, Pool Indoor, Private Elevator, Sauna, Spa Lounge, Wine Cellar, Garden, Mountain View



Le Chalet Mont Blanc is a luxurious modern retreat in the Chamonix Valley. Combining Scandinavian chic with ski lodge warmth, this elegant property boasts expansive lounge areas, vaulted ceilings and rich timber finishes. The chalet offers an extraordinary setting for relaxation, with breathtaking views of the alpine landscape.

[VIEW MORE](#)

**WEEKLY STAY**

**Starting at €100,000**

*\*Exclusive of Fees*



LVH

# COURCHEVEL FRANCE



TABLE OF CONTENTS

Courchevel, nestled in the illustrious Tarentaise Valley, epitomizes alpine luxury and glamorous skiing. It is France’s most glamorous ski resort, catering to discerning snow enthusiasts with 600km of interlinked pistes. This winter wonderland boasts three diverse skiing areas, including Courchevel 1850, Le Praz, and Moriond, providing numerous adventurous experiences and a plethora of extravagant activities. Exquisite mountain dining, from casual to glamorous, delivers an exceptional experience amidst the stunning snowy peaks.

AIRPORTS

INTERNATIONAL COMMERCIAL  
PRIVATE

Chambéry (CMF/ LFLB) 63.6 km  
Courchevel (CVF/LFLJ) 4 km

RESORT QUALITIES

CHARM FACTOR	♥♥♥♥♥
NON-SKIER	♥♥♥♥♥
RESORT LAYOUT	♥♥♥♥♥
SHORT TRANSFER	♥♥♥♥♥
KID-FRIENDLY	♥♥♥♥♥
SLOPES	♥♥♥♥♥
APRÈS SKI	♥♥♥♥♥
FINE DINING	♥♥♥♥♥
NIGHTLIFE	♥♥♥♥♥
SHOPPING	♥♥♥♥♥
CULTURE	♥♥♥♥♥
UNIQUE ACTIVITIES	♥♥♥♥♥

PROS

- Diverse terrain for all skiers
- Glamorous dining opportunities
- Stunning mountain views
- Dependable snow as terrain is above 1,800m
- Backcountry access accessible via lifts
- Five resort villages to match any budget or taste
- Seamless links between villages and to Meribel
- Lively spots for après ski and fine dining options
- Abundant accommodations with direct access to the slopes

CONS

- Crowded on the slopes in high season
- Limited terrain park facilities, focusing more on skiing experiences



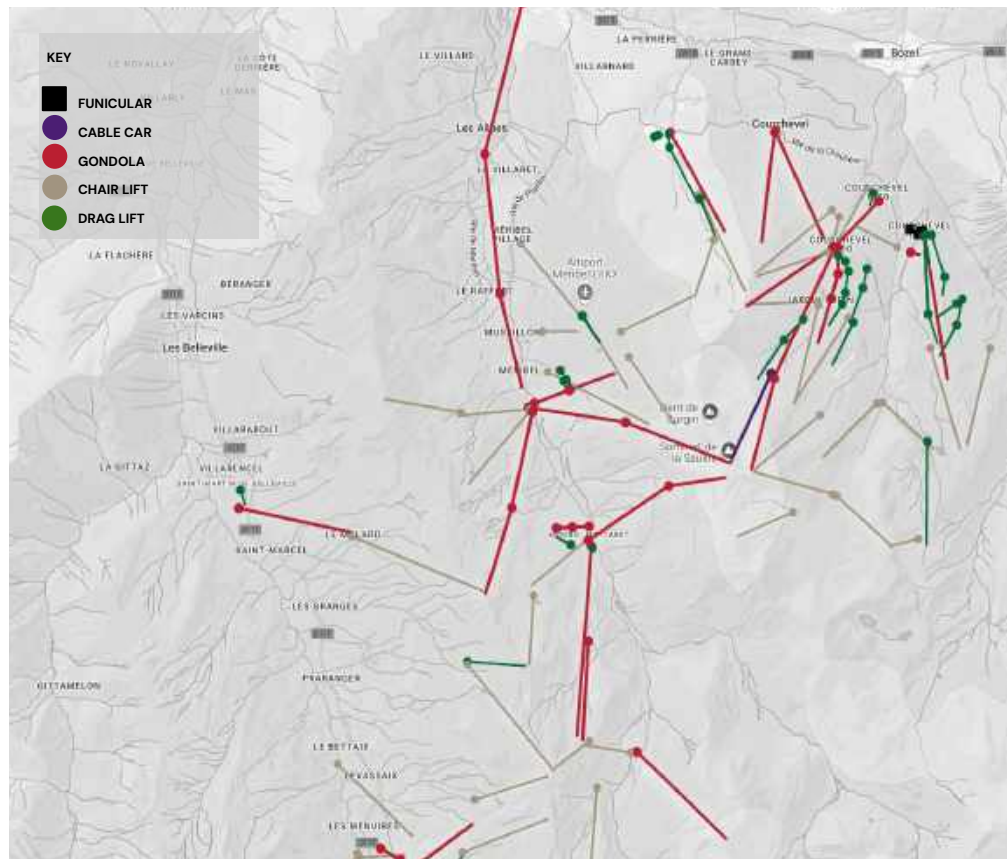
Courchevel, set at the western edge of the Three Valleys—the world's largest connected ski area—consists of four satellite villages: Courchevel Le Praz, Courchevel 1550, Courchevel 1650, and the luxurious Courchevel 1850. Renowned for its advanced system and unrivaled access to the expansive ski domain, Courchevel 1850 stands as the pinnacle of luxury skiing. It offers diverse slopes suitable for all skill levels, from gentle runs for beginners to expansive terrains for seasoned skiers, ensuring an exceptional experience for every visitor.

## SUMMARY

Length of Runs	170 km
Total Skiable Terrain	600 km
Longest Run	7 km+
Elevation	Courchevel only 1,100m – 2,740m (1,640m)
Average Snowfall	<b>3 Valleys</b> 1,100m – 3,230m (2,130m)
Snow Conditions	★★★★★

## LEVEL OF SKIING

Beginners	★★★★★
Intermediate	★★★★★
Advanced	★★★★★
Experts	★★★★★
Extreme	★★★★★
Off-Piste	★★★★★
Tree-Skiing	★★★★★
Ski Area Overall	★★★★★







## COURCHEVEL 1850

- 150km of diverse pistes and exceptional off-piste opportunities
- A wide range of groomed pistes for all levels
- Excellent for beginners and intermediates
- Excellent off-piste terrain with challenging couloirs
- Four resort villages cater to different preferences
- Seamless connections to Meribel



## ST MARTIN DE BELLEVILLE

- The prettiest and most authentic village in the Belleville valley
- 3 Vallees Integration
- A super modern and efficient lift infrastructure
- Ideal for novices
- Excellent freeride terrain, especially from Roc de Fer into St Martin
- Quiet Village Atmosphere
- A traditional village setting
- Long Ski Runs up to 7 km



## LE MENUIRES

- Underrated Gem
- High elevation ensures snow-sure conditions with most terrain above 1,800m
- A modern and quick lift infrastructure
- Excellent off-piste from La Masse
- Well-connected to Meribel, St Martin and Val Thorens, enhancing ski exploration
- High-rise suburban feel



## COURCHEVEL 1650 MORIOND

- Friendly village atmosphere
- Welcoming vibe
- Excellent skiing conditions ideal for intermediates
- Conveniently located for accessing Three Valleys
- Reaching Courchevel 1850 requires some effort
- A stable local population contributes to its authentic charm.



## COURCHEVEL 1550 VILLAGE

- Underrated Gem
- High elevation ensures snow-sure conditions with most terrain above 1,800m.
- A modern and quick lift infrastructure
- Excellent off-piste from La Masse
- Well-connected to Meribel, St Martin, and Val Thorens, enhancing ski exploration



## ON THE SLOPES

- Skiing
- Snowboarding
- Night Skiing & Torchlight Descent
- Telemarking
- Heliskiing & Heliboarding
- Speed Riding
- Glacier Skiing only in Meribel & Val Thorens (as part of 3 Valleys)



## IN THE RESORT

- Ski Touring & Splitboarding
- Snowshoeing
- Airboarding
- Snowmobiling
- Moonbiking
- Fat Biking
- Moriond Luge Racing
- Aquamotion Centre
- Dog Sledding
- A Horse-Drawn Carriage Ride
- Ice Diving
- Ice Climbing
- Hot Air Ballooning
- Mushing/dog sledding
- Hang-gliding



## DESTINATION EXCLUSIVE

- The Rosiere Lake Walk
- Pleasure Flights
- Art At The Top – Guided Tour
- Heli Ride To The Ice Circuit Of Val Thorens
- Helicopter Flying Lessons
- Light Aircraft Flying Lessons
- Skydiving
- Children's Village (Village Des Enfants)
- The Family Park
- Art At The Summit—An Open-Air Art Museum
- Ski Jumping World Cup
- Women's Alpine Ski World Cup (Giant Slalom)
- Snowmobile On Children's Circuit



## APRÈS SKI

- La Soucoupe
- Le Tremplin
- La Folie Douce
- Cap Horn
- La Cave Des Creux



## FINE DINING

- Le 1947  
3\*Michelin | Creative
- Le Montgomerie  
2\* Michelin | Creative,
- Le Kintessence  
2\*Michelin | French
- Gaia | Asian, Japanese
- Bagatelle | French,  
Mediterranean
- Le Chabichou 2\* Michelin |  
Creative



## NIGHTLIFE

- L'aventure | Late Night  
Restaurant
- La Mangeoire | Lounge &  
Piano Bar
- La Grange | Karaoke,  
Nightclub
- Nokken | Nightclub



## SHOPPING

- Bernard Orcel
- Piste Noire Artisanal  
Chocolate
- Jean Blanc Sports
- Moncler Ski-Through  
Boutique
- Le Baricou



## CULTURE

- Galerie Saint Martin
- Galerie Marie-Christine  
Grulier
- Galeries Bartoux
- Bel Air Fine Art





COURCHEVEL 1850 NOGENTIL,  
COURCHEVEL



6 GUEST SUITES



12 GUESTS



Cinema Room, Gym, Hammam,  
Jacuzzi Indoor, Massage Room,  
Pool Indoor, Sauna, Spa Lounge,  
Wine Storage, Ski In / Ski Out



Chalet Coquelicot is a luxurious  
Courchevel retreat in the exclusive  
Nogentil area. This stunning  
property exudes aristocratic  
refinement. Dark timber walls and  
silver accents enhance the  
sophistication of the spacious  
interiors, while open living areas  
seamlessly connect with the  
outdoors.

[VIEW MORE](#)

**WEEKLY STAY**

**Starting at €200,500**

*\*Exclusive of Fees*

LVH

# MEGÈVE

FRANCE



TABLE OF CONTENTS

Megève ski resort, in France's Haute Savoie region, is celebrated for its charming village ambiance, preserving history and tradition. Initially developed by the Rothschilds as France's answer to St Moritz, it is renowned for its chic and cosmopolitan appeal. Ideal for families, couples, and groups, Megève features long, gentle slopes and a vibrant non-ski scene, including exquisite dining options. While it caters to leisure seekers, even avid skiers can enjoy the slopes when conditions are optimal.

AIRPORTS

INTERNATIONAL COMMERCIAL  
PRIVATE

Geneve (GVA/LFHM) 88 km  
Megève Airport (LFHM /MVV) 5 km

RESORT QUALITIES

CHARM FACTOR	♥♥♥♥♥♥♥♥
NON-SKIER	♥♥♥♥♥♥♥♥
RESORT LAYOUT	♥♥♥♥♥♥♥♥
SHORT TRANSFER	♥♥♥♥♥♥♥♥
KID-FRIENDLY	♥♥♥♥♥♥♥♥
SLOPES	♥♥♥♥♥♥♥♥
APRÈS SKI	♥♥♥♥♥♥♥♥
FINE DINING	♥♥♥♥♥♥♥♥
NIGHTLIFE	♥♥♥♥♥♥♥♥
SHOPPING	♥♥♥♥♥♥♥♥
CULTURE	♥♥♥♥♥♥♥♥
UNIQUE ACTIVITIES	♥♥♥♥♥♥♥♥

PROS

- Authentic French Alps village & ski resort centered around a cobbled village square with a historic church, featuring horse and sleigh taxis
- Enormous network of lifts & ski trails
- Quality on-piste trails for novice, beginner & intermediate skiers & snowboarders
- A hub for high-end shopping and luxurious stays
- Classy boutiques, exclusive bars, and gourmet dining

CONS

- Quieter nightlife
- Potential crowds
- Low elevation causing less natural snow
- Limited advanced on-piste & quality off-piste terrain





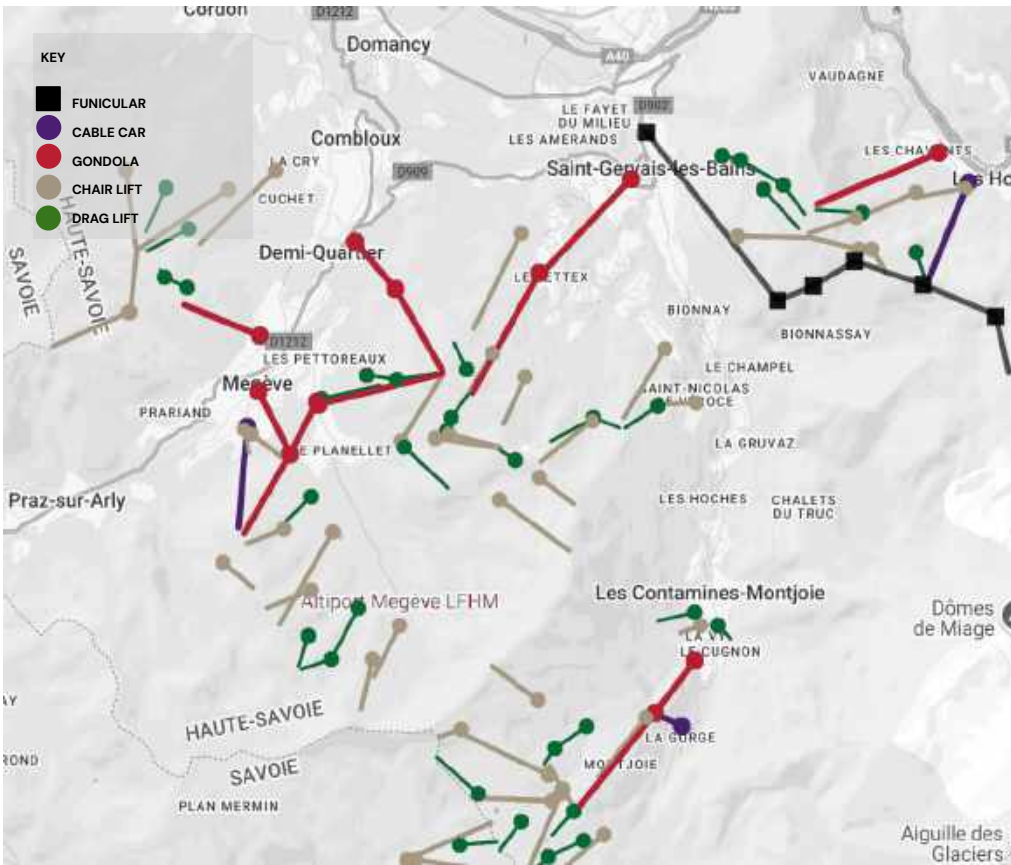
Megève’s expansive ski area spanning 445 kilometers of trails covered by the Evasion Mont Blanc lift pass. The terrain is mainly for novice and intermediate skiers, while advanced skiers can access neighboring resorts. With reliable snow cover, despite the altitude, this region boasts scenic off-piste runs through alpine meadows. As part of the Evasion Mont Blanc ski pass region, it promises mountain splendor and adventure, with proximity to Chamonix and Les Contamine.

SUMMARY

Length of Runs	170 km
Total Skiable Terrain	6 km (Brevet)
Longest Run	22 km (Vallee Blanche)
Elevation	1,035m – 3,840m (2,840)
Average Snowfall	6 to 10 metres
Snow Conditions	🎿🎿🎿🎿🎿

LEVEL OF SKIING

Beginners	🎿🎿🎿🎿🎿
Intermediate	🎿🎿🎿🎿🎿
Advanced	🎿🎿🎿🎿🎿
Experts	🎿🎿🎿🎿🎿
Extreme	🎿🎿🎿🎿🎿
Off-Piste	🎿🎿🎿🎿🎿
Tree-Skiing	🎿🎿🎿🎿🎿
Ski Area Overall	🎿🎿🎿🎿🎿





## ST GERVAIS - ST NICOLAS

- Traditional French Alps skiing experience
- A vast network of 260 km predominantly beginner-intermediate trails, with an impressive vertical drop of over 1,450m
- Part of the Evasion Mont Blanc ski pass region
- Access to extensive alpine adventures near Chamonix and Les Contamines
- Pros include a charming spa town atmosphere
- Quality trails for beginners and intermediates



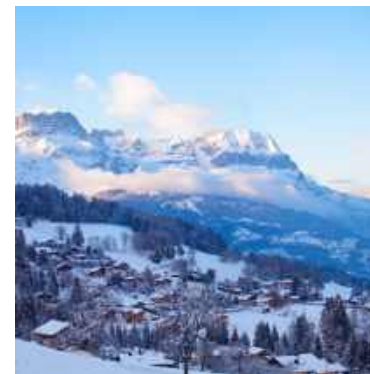
## LES CONTAMINES - HAUTELUCE

- Straddles Haute Savoie and Savoie near Mont Blanc
- The resort offers 120 km of ski trails with a substantial vertical drop of over 1,300m, attracting avid skiers and powder hounds.
- Nestled in a quiet valley between Megève and Chamonix, it provides a serene skiing experience away from the crowds.
- Ideal for those looking for a diverse skiing experience with a mix of trail types and stunning alpine views



## ST NICOLAS - MONT JOLY

- The St Nicolas – Mont Joly sector offers challenging, snow-sure terrain ideal for advanced skiers and powder hounds.
- Access from Megève is lengthy
- Mont d'Arbois provides a variety of terrain, easily accessible once reached.
- Higher slopes are well-covered with snow, with surface tows that may tire beginners quickly.



## COMBLOUX

- A traditional mountain village with elegant wood-and-stone chalets
- Stunning views of the Fiz, Aiguilles Rouges and Mont-Blanc mountain ranges
- Les Portes du Mont-Blanc ski area provides access to over 100 km of pistes, ideal for skiing amidst pine forests with views of Mont-Blanc.
- Diverse skiing experience within Evasion Mont-Blanc ski area
- Features 183 ski pistes with varied slopes and landscapes
- Ski touring and cross-country skiing options are available.



## ON THE SLOPES

- Skiing
- Snowboarding
- Heliskiing & Heliboarding (in bordering Switzerland & Italy)
- Free Ride



## IN THE RESORT

- Snowshoeing
- Outdoor Dining
- Curling
- Ski Mountaineering
- Fat Bikes
- Ice Skating
- Dog Sledding
- Ice Hockey



## DESTINATION EXCLUSIVE

- Golf Instruction At Mont D'arbois
- Family Caving
- Hot Air Ballooning Over The Mont Blanc Massif
- Gastronomic Evening At Le Refuge De La Traye





## APRES SKI

- The Rooftop Bar
- Bar Edmond At Four Seasons Hotel
- Le Bar Des Fermes De Marie
- Bar Du S
- La Folie Douce Saint Gervais Megève



## FINE DINING

- Flocons De Sel  
3\* Michelin | Modern
- La Table De L'alpaga  
1\* Michelin | Creative
- La Dame De Pic – Le 1920  
1\* Michelin | Creative
- Kaito | Japanese, Fusion
- Le Saint-Nicolas At Au Coin De Feu | Creative



## NIGHTLIFE

- The Lodge Bar
- Wine Cellar At Four Seasons Hotel
- The Gallery Bar At Le Stelsia Casino
- Le Nid Du Piaf
- Le Tigrr Palace



## SHOPPING

- Blu & Berry Store
- Galerie Saint-Martin
- Joaillerie Guilhem
- Hermès
- Bel-Air Fine Art



## CULTURE

- The Church Of Saint Jean Baptiste
- Le Chemin Du Calvaire
- The Panoramic Cinema
- Art Gallery Harmattan
- Mont D'arbois Astronomical Observatory



DEMI-QUARTIER, MEGEVE



8 GUEST SUITES



18 GUESTS



Bar, Game Room, Gym, Hammam, Jacuzzi Indoor, Massage Room, Nightclub, Pool Indoor, Spa Lounge, Jacuzzi Outdoor



Ultima Megève is a breathtaking chalet, blending Alpine charm with high-culture sophistication. Situated on picturesque terrain, it offers majestic views of winter landscapes. The expansive interiors feature fine timber grains, exposed beams, and double-story vaulted ceilings, illuminated by wraparound glass walls and clerestory windows.

[VIEW MORE](#)

**WEEKLY STAY**

**Starting at €164,500**

*\*Exclusive of Fees*

LVH

# MÉRIBEL

## FRANCE



TABLE OF CONTENTS



Méribel, a quintessential traditional alpine resort nestled in the world’s largest ski area. Established in the late 1930s, it maintains its picturesque allure with local stone, slate and wood buildings, avoiding the concrete blocks of many French resorts. Afternoon sunlight on the enchanting ski slopes in Meribel Village, Les Allues, and Mottaret offers a distinct and tranquil experience. Les Allues, the vital point of the Meribel Valley, is a charming village near the main resort, offering a cozy and authentic mountain experience.

AIRPORTS

INTERNATIONAL COMMERCIAL  
PRIVATE

Chambéry Airport (CMA/LFLB) 100 km  
Courchevel Altiport (CVF/LFLJ) 25 km

RESORT QUALITIES

CHARM FACTOR	★★★★★
NON-SKIER	★★★★★
RESORT LAYOUT	★★★★★
SHORT TRANSFER	★★★★★
KID-FRIENDLY	★★★★★
SLOPES	★★★★★
APRÈS SKI	★★★★★
FINE DINING	★★★★★
NIGHTLIFE	★★★★★
SHOPPING	★★★★★
CULTURE	★★★★★
UNIQUE ACTIVITIES	★★★★★

PROS

- Traditional Alpine charm
- Apres-ski and nightlife
- Ease of access to the entire 3 Vallées ski domain
- Varied terrain for all levels
- A vibrant music scene
- High-altitude ski area with over 1500m verticals
- Ideal for intermediates who enjoy well-groomed green, blue, and red runs
- Perfect for off-piste freeriders seeking diverse and adventurous powder terrain

CONS

- Resort spread out
- Slushy spring conditions in April on the lower pistes
- Potential crowds

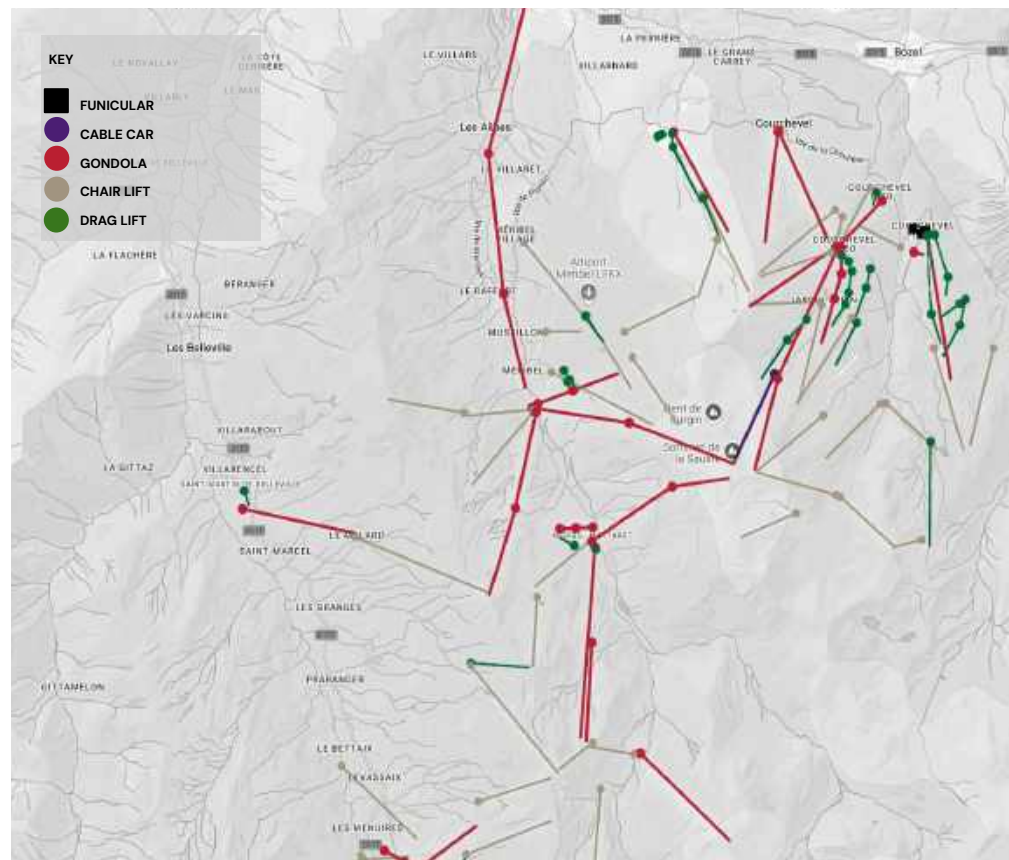


## SUMMARY

Length of Runs	150 km
Total Skiable Terrain	650 km
Longest Run	5 km+
Elevation	1,100m – 2952m
Average Snowfall	5 to 7 metres
Snow Conditions	

## LEVEL OF SKIING

Beginners	👑👑👑👑👑
Intermediate	👑👑👑👑👑
Advanced	👑👑👑👑👑
Experts	👑👑👑👑👑
Extreme	👑👑👑👑👑
Off-Piste	👑👑👑👑👑
Tree-Skiing	👑👑👑👑👑
Ski Area Overall	👑👑👑👑👑





## COURCHEVEL

- Known as a billionaire's playground and the most glamorous ski resort in France
- 150 km of piste served by 58 lifts
- Exceptional skiing and snowboarding for all levels, from forested slopes to extreme alpine
- Features a massive 1,640m vertical descent from Saulire
- Renowned for excellent freeride, off-piste terrain
- Best learn-to-ski terrain in the region with plentiful green and blue runs
- Reliable snow with northerly aspect and high elevation
- Generally modern lift system with minimal wait
- Well-signposted, seamless connections between villages and to Meribel



## LES MENUIRES

- An excellent family ski destination
- High elevation with most terrain above 1,800m, ensuring snow reliability
- Modern and efficient lift system with long skiable verticals
- A nice range of non-ski activities for families
- Excellent links to nearby resorts in the Belleville Valley
- Trails perfect for beginners and novices on the village side
- Busy village with a challenging, non-traditional aesthetic
- Mediocre off-piste terrain near the village
- Western side offers challenging slopes for advanced riders with great powder conditions



## ST MARTIN DE BELLEVILLE

- Easy access to Meribel and Les Menuires
- Known for its authentic village charm, it provides a traditional alpine experience within the world's largest ski area.
- Long beginner runs and diverse terrain for intermediates
- Some off-piste opportunities
- Efficient, modern lift system connects seamlessly with neighboring resorts
- Limited advanced terrain directly within the resort but excellent access to challenging slopes nearby





## ON THE SLOPES

- Skiing
- Snowboarding
- Free Ride
- Heliskiing & Heliboarding (in bordering Switzerland & Italy)
- Gebroulaz Glacier Skiing
- Glacier Skiing in Val Thorens



## IN THE RESORT

- Cross-Country Skiing
- Scenic Winter Hikes
- Bobsledding
- Ski Mountaineering
- Fat Biking
- Dog Sledding
- Ice Skating
- Snowmobiling
- Horse Sleigh Rides
- Hot Air Ballooning



## DESTINATION EXCLUSIVE

- Element Park
- Yeti Park
- Private Sunrise Ski Tour
- Gourmet Picnic On The Summit
- Ice Fall Climbing On Frozen Waterfalls



## APRES SKI

- La Folie Douce Jacks
- Le Rond Point
- La Terrasse Du Village
- Copiña



## FINE DINING

- L'écrin By Laurent Azoulay 1\* Michelin | Modern
- Le Cèpe | Traditional
- Le 80 | Traditional
- Fifi | Italian
- Restaurant Allodis | French



## NIGHTLIFE

- Cosy Piano Bar
- Bar At Adray Telebar
- The Savoy Bar
- Barometar



## SHOPPING

- Minécim
- Le Folie Shop
- L'escale
- The Fusalp Maison



## CULTURE

- Maison De La Réserve at the Tueda Lake
- Art Gallery D'en Haut
- Altiport
- Historical Sites
- Tasting Local Cuisine



MÉRIBEL LES ALLUES, MÉRIBEL



7 GUEST SUITES



14 GUESTS



Bar, Cinema Room, Game Room, Hammam, Massage Room, Private Elevator, Ski Room, Wine Storage, Jacuzzi Outdoor, Ski Walk To Lift



Chalet Valentine is an enchanting luxury ski lodge in the revered Belvedere region of Meribel. Hidden in fragrant woodlands overlooking the glorious French Alps—it is brimming with quintessential Alpine charm. This luxury vacation Chalet is privy to gorgeous millwork and folkloric decor, curating a distinctly French ambiance.

**VIEW MORE**

**WEEKLY STAY**

**Starting at €65,500**

*\*Exclusive of Fees*



LVH

# VAL D'ISERE

## FRANCE



TABLE OF CONTENTS

Enveloped by the French Alps, Val d'Isere represents a unison of historical charm and premium skiing. After World War I with the construction of the Iseran road, this area began transforming into a luxurious ski destination. The 1992 Winter Olympics further enhanced the appeal of Val d'Isere without diminishing its village charm. For travelers seeking adventure beyond the slopes, Val d'Isere offers a plethora of invigorating activities you can embrace amidst the serenity of the snowy landscapes.

AIRPORTS

INTERNATIONAL COMMERCIAL  
PRIVATE

Chambéry Airport (CMA/LFLB) 140 km  
Courchevel Altiport (CVF/LFLJ) 65 km



RESORT QUALITIES

CHARM FACTOR	★★★★★
NON-SKIER'S	★★★★★
RESORT LAYOUT	★★★★★
SHORT TRANSFER	★★★★★
KID-FRIENDLY	★★★★★
SLOPES	★★★★★
APRÈS SKI	★★★★★
FINE DINING	★★★★★
NIGHTLIFE	★★★★★
SHOPPING	★★★★★
CULTURE	★★★★★
UNIQUE ACTIVITIES	★★★★★

PROS

- On-piste terrain suitable for all skill levels
- Diverse summer and winter activities
- The most reliable snow cover in the French Alps
- Charming and picturesque resort village
- Vibrant après-ski scene
- Vibrant après ski scene, appealing to those seeking lively entertainment
- Wide array of activities for non-skiers

CONS

- Potentially overcrowds during peak season
- On-piste trails may develop moguls by midday.
- Off-piste areas can quickly become tracked out during busy periods



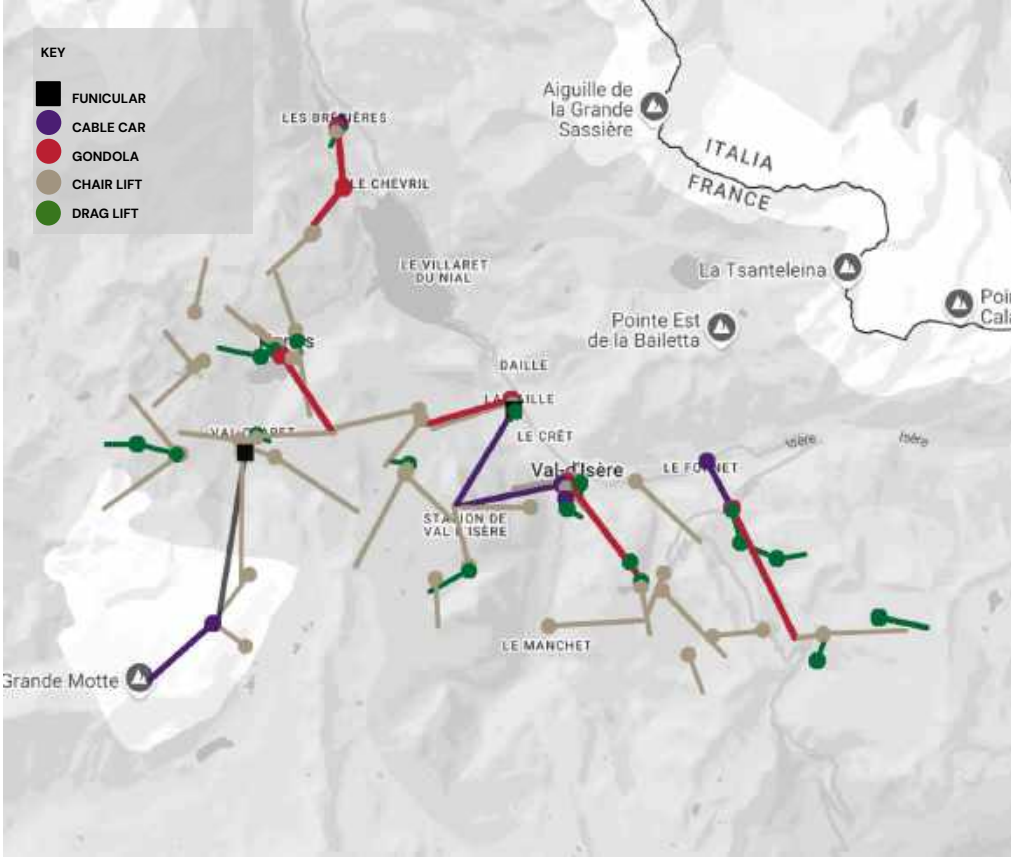
This premier ski resort boasts impeccable snow records and expansive terrain. Well-linked with Tignes, this winter paradise offers over 300 kilometers of pistes and off-piste adventures at soaring altitudes of 3,000 meters. As seasoned skiers face challenging slopes, intermediates take up numerous gentle runs, while novices can glide down the complimentary nursery slopes. It consists of four separate villages with no single large, lively center. High-altitude villages (like Val Claret, Le Lac) can be extremely cold during mid-winter.

SUMMARY

Length of Runs	150 km
Total Skiable Terrain	300 km (incl. Tignes)
Longest Run	10 km+
Elevation	1,550m – 3,456m
Average Snowfall	7 to 10 metres
Snow Conditions	★★★★★

LEVEL OF SKIING

Beginners	★★★★★
Intermediate	★★★★★
Advanced	★★★★★
Experts	★★★★★
Extreme	★★★★★
Off-Piste	★★★★★
Tree-Skiing	★★★★★
Ski Area Overall	★★★★★







## VAL D'ISERE

- Equipped with modern lifts and facilities
- Extensive off-piste freeride and backcountry terrain for all abilities
- Impressive skiable vertical
- Expansive and excellent on-piste terrain suitable for all levels of skiers and snowboarders
- Renowned for the most reliable snow cover in France, ensuring excellent skiing conditions
- Charming resort village with a delightful ambiance
- Combined lift pass with Tignes



## TIGNES

- Ideal for intermediate and advanced skiers and snowboarders
- Consistent snow reliability, with most terrain above 2,000m elevation
- Equipped with modern lifts and facilities
- Vast off-piste and backcountry terrain catering to all levels
- Excellent range of expert and extreme skiing options
- Enjoyable après-ski experience
- Picturesque alpine village settings
- Limited true novice and beginner pistes; better options in Val d'Isère



## TIGNES VAL CLARET

- A prime destination for both winter and summer vacations
- Central hub of the Tignes resort with direct lift access to the Grande Motte glacier
- A vibrant yet cozy atmosphere for holidaymakers
- Bustling winter activity center with seamless lift connections
- Consistently excellent snow conditions make it a skiing favorite.
- Easy access to Grande Motte and Espace Killy ski areas
- Features high-end boutiques, sports shops, and cozy cafés and bars



## LA DAILLE VAL D'ISERE

- Strategically located at the entrance to Val d'Isère resort
- A mix of high-rise apartment blocks and traditional chalets
- Excellent lift access to the Espace Killy ski area
- Direct access to Belvedere slopes, connecting to Tignes
- Offers a vibrant winter atmosphere
- Ideal for quick access to skiing with minimal delay



## ON THE SLOPES

- Skiing
- Snowboarding
- Free Ride
- Backcountry Skiing
- Heliskiing & Heliboarding (in bordering Switzerland & Italy)
- Speedflying
- Pissailas Glacier Skiing (known as the Val d'Isère Glacier)



## IN THE RESORT

- Cross-Country Skiing
- Winter Hiking
- Ice Diving
- Ski Mountaineering
- Paragliding
- Ice Skating
- Dog Sledding
- Snowmobiling
- Helicopter Flights
- Snowmobiling



## DESTINATION EXCLUSIVE

- Wilderness Evening & Fondue Dinner
- Tetra Ski School - Specialized In On & Off-Piste Lessons
- Ice Floating In Ouillette Lake
- Yoga With Altitude



## APRÈS SKI

- Cabaret Show at La Folie Douce
- La Plage
- L'étincelle
- Le Yule
- Bernard Orcel Luxury Ski Room at K2 Chogori



## FINE DINING

- La Table De L'ours  
1\* Michelin | Modern
- L'altiplano | Peruvian
- La Cucùcina | Italian
- La Mourra | Japanese Fusion
- Le Blizzard | French, Savoyard



## NIGHTLIFE

- Dick's Tea Bar
- Doudoune Club
- Victor's
- Le Bar Rouge
- The M Bar



## SHOPPING

- Fusalp
- Moncler Boutique
- Airelles - A Private Luxury Shopping Session
- Boutique Décalés



## CULTURE

- Galerie Jane Griffiths
- History Museum
- Winter Olympics Destination
- Exploring Romanesque Buildings





VAL D'ISÈRE, VAL D'ISÈRE



7 GUEST SUITES



14 GUESTS



Bar, Hammam, Massage Room, Pool  
Indoor, Private Elevator, Spa  
Lounge, Jacuzzi Outdoor, Pool  
Outdoor Heated, Ski Walk To Lift



Chalet Etoile du Nord East Wing is a remarkable luxury retreat that embodies modern chalet opulence, with sleek lines and warm oak interiors. It offers breathtaking views of the village and mountains, complemented by the warmth of the fireplace. A blend of marble details and postmodern decor enhances its sophisticated ambiance.

[VIEW MORE](#)

**WEEKLY STAY**

**Starting at €180,600**

*\*Exclusive of Fees*

LVH

# VAL THORENS FRANCE



TABLE OF CONTENTS

As the highest resort in the Alps, Val Thorens flaunts exceptional snow reliability and breathtaking vistas. Nestled in the heart of the Three Valleys, this compact resort features accessible modern lifts to Meribel and Courchevel. This stunning destination comprises three villages, Les Menuires, Val Thorens, and Saint Martin de Belleville, all together offering 600 kilometers of skiing, catering to all levels. Beyond skiing, Val Thorens offers numerous activities to thrill-seekers and leisure enthusiasts.

AIRPORTS

INTERNATIONAL COMMERCIAL  
PRIVATE

Chambéry Airport (CMA/LFLB) 120 km  
Courchevel Altiport (CVF/LFLJ) 37 km



RESORT QUALITIES

CHARM FACTOR	★★★★★
NON-SKIER	★★★★★
RESORT LAYOUT	★★★★★
SHORT TRANSFER	★★★★★
KID-FRIENDLY	★★★★★
SLOPES	★★★★★
APRÈS SKI	★★★★★
FINE DINING	★★★★★
NIGHTLIFE	★★★★★
SHOPPING	★★★★★
CULTURE	★★★★★
UNIQUE ACTIVITIES	★★★★★

PROS

- Modern lift system
- Varied winter activities
- Extensive ski area
- Exceptional snow reliability
- Lively après ski scene in and around the village
- Predominantly ski-in, ski-out accommodation
- Unique non-ski activities, including the thrilling La TyrOlienne zip-line and a long toboggan run
- Ample free parking near the ski lifts for day trippers

CONS


- Compact layout
- Limited advanced and expert on-piste terrain
- Exposed to harsh weather conditions, particularly cold and windy days





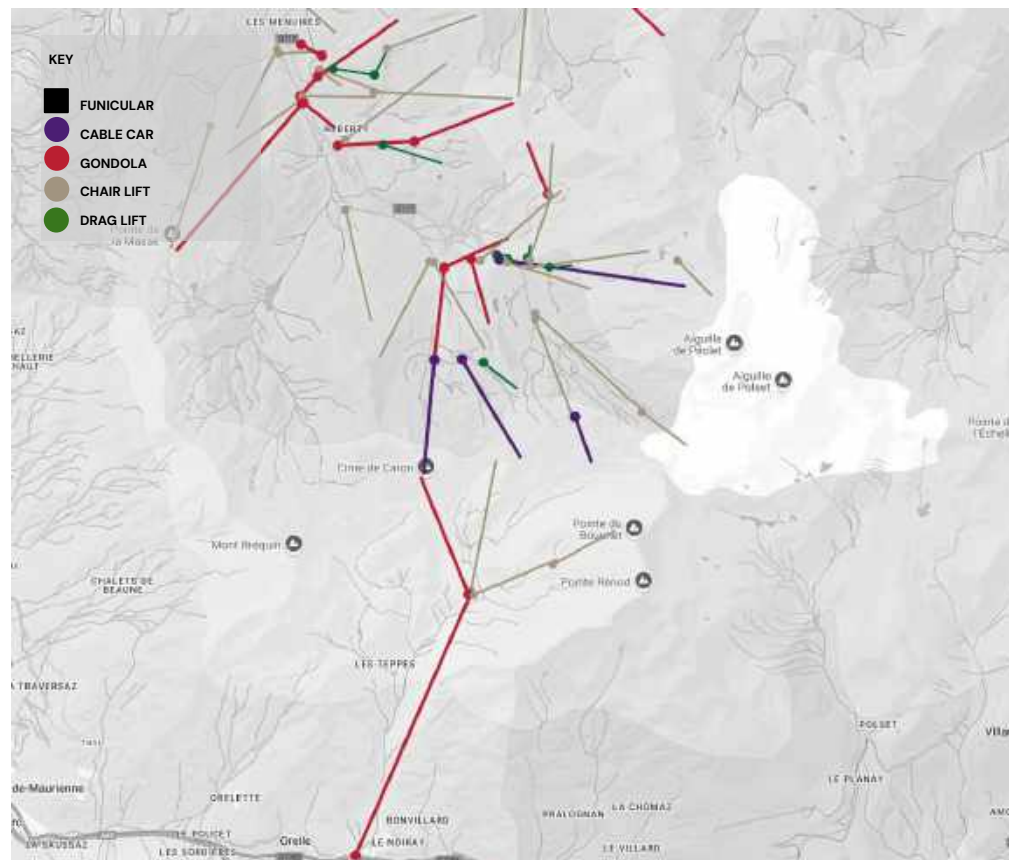
The extended ski season in Val Thorens offers more opportunities for exceptional skiing, with predominantly north-facing slopes, boasting pristine snow. The resort is excellent for novices and intermediates with 150 kilometers of slopes dedicated to these skill levels. While experts may challenge themselves on the steeper, more exhilarating terrain from the Cime Caron.

## SUMMARY

Length of Runs	150 km
Total Skiable Terrain	600 km
Longest Run	12 km
Elevation	1,800m – 3,230m
Average Snowfall	6 to 8 metres
Snow Conditions	

## LEVEL OF SKIING

Beginners	🔱🔱🔱🔱🔱
Intermediate	🔱🔱🔱🔱🔱🔱
Advanced	🔱🔱🔱🔱🔱🔱
Experts	🔱🔱🔱🔱🔱🔱
Extreme	🔱🔱🔱🔱🔱🔱
Off-Piste	🔱🔱🔱🔱🔱🔱
Tree-Skiing	🔱🔱🔱🔱🔱🔱
Ski Area Overall	🔱🔱🔱🔱🔱🔱





## VAL THORENS

- Europe's highest ski resort village
- Exceptional snow reliability
- Long ski season from November to early May
- Excellent snow quality on north-facing slopes
- Ultra-modern and efficient lift system, in the 3 Vallées
- On-piste caters to all skill levels
- Favorable for beginners and intermediates
- Expansive off-piste freeride and backcountry trails
- Village trails can get worn and bumpy by evening.



## ORELLE

- In the heart of the Maurienne valley
- Traditional alpine life
- Seamlessly connected to the 3 Vallées ski area via the modern Orelle gondola in just 13-minute ride
- An additional 7-minute ride takes to the iconic Cime Caron summit (3,195 m) the highest peaks of Les 3 Vallées ski area.
- Nine ski runs, five naturally snow-covered
- Lory blue run is over 4 kilometers long and free from ski lifts.



## LE MENUIRES

- Underrated Gem
- High elevation ensures snow-sure conditions with most terrain above 1,800m
- Features a modern and quick lift infrastructure
- Excellent off-piste from La Masse
- Well-connected to Meribel, St Martin and Val Thorens, enhancing ski exploration
- The village has a unique high-rise suburban feel.



## ST MARTIN DE BELLEVILLE

- The prettiest and most authentic village in the Belleville valley
- 3 Vallees integration
- A super modern and efficient lift infrastructure
- Ideal for novices
- Excellent freeride terrain, especially from Roc de Fer into St Martin
- A traditional village setting on the edge of a bustling ski region
- Long Ski Runs up to 7 km



## MERIBEL

- Offering 150 km of diverse pistes
- Offers a wide range of groomed pistes for all levels, especially excellent for beginners and intermediates
- Excellent off-piste terrain with challenging couloirs



## ON THE SLOPES

- Skiing
- Snowboarding
- Off-Piste Skiing
- Heliskiing & Heliboarding (in bordering Switzerland & Italy)
- Evening Skiing
- Six Glacier – Three Skiable:
  - Glacier de Thorens
  - Mont Peclet Glacier
  - Glacier de la Pointe Renod



## IN THE RESORT

- Ski Touring
- Hiking
- Ice Diving
- Ski Mountaineering
- Icefall
- Ice Skating
- Dog Sledding
- Snowmobiling
- Paragliding
- Ice Karting



## DESTINATION EXCLUSIVE

- Evening In A Yurt
- Yeti Park
- Private Igloo Dinner
- La Tyrolienne Zip Line
- Ice Driving
- Long Toboggan Run
- Helicopter Flights
- Orelle Ziplining





## APRÈS SKI

- La Folie Douce Favela
- La Terrasse At Koh-I Nor
- The Tango Bar
- La Terrasse At Fahrenheit Seven



## FINE DINING

- Les Explorateurs at Hotel Pashmina 1\* Michelin | Modern
- Le Diamant Noir | Modern
- Le Fitz Roy | French, Contemporary
- La Cabane | French
- 2mille3 | French, European



## NIGHTLIFE

- Le Zinc At Fahrenheit Seven
- Bar At Altapura
- Klub Summit
- Malaysia
- Jackie



## SHOPPING

- Ski Shop In Koh-I Nor Hotel
- Skishop By Goitschel
- Le Folie Shop
- Le Colporteur at Hotel Pashmina



## CULTURE

- Wine Tasting At La Bouitte
- Mountain Villages Guided Tours
- Private Cooking Classes
- Alain Prost Ice Circuit
- Igloo Village



VAL THORENS, VAL THORENS



8 GUEST SUITES



15 GUESTS



Bar, Fitness Room, Game Room,  
Hamam, Jacuzzi Indoor, Pool  
Indoor, Private Elevator, Sauna,  
Wine Cellar, Ski In / Ski Out



La Datcha Val Thorens is a luxurious ski complex in the heart of Val Thorens with prime ski access. The chalet features a south-facing terrace that provides breathtaking views of Glacier de Peclet and Cime de Caron mountain, immersing guests in stunning natural beauty while remaining at the center of resort activity.

[VIEW MORE](#)**WEEKLY STAY****Starting at €139,500***\*Exclusive of Fees*



LVH

# CHAMOIS/AOSTA VALLEY ITALY



Valle d'Aosta, nestled in the Alps, is a stunning blend of natural beauty, history and winter sports. The region boasts nine locations, including Cervinia, renowned for its extensive ski terrain and views of the Matterhorn. Chamois offers a tranquil escape as the only Italian car-free village with charming slopes. Beyond skiing, Valle d'Aosta is rich in history with Roman ruins and medieval castles, making it a perfect destination for travelers seeking both adventure and cultural exploration amidst breathtaking Alpine landscapes.

AIRPORTS

INTERNATIONAL COMMERCIAL  
PRIVATE

Turin Caselle Airport (TRN/LIMF) 97 km  
Turin Caselle Airport FBO (TRN/LIMF) 97 km



RESORT QUALITIES

CHARM FACTOR	♥♥♥♥♥
NON-SKIERS	♥♥♥♥♥
RESORT LAYOUT	♥♥♥♥♥
SHORT TRANSFER	♥♥♥♥♥
KID-FRIENDLY	♥♥♥♥♥
SLOPES	♥♥♥♥♥
APRÈS SKI	♥♥♥♥♥
FINE DINING	♥♥♥♥♥
NIGHTLIFE	♥♥♥♥♥
SHOPPING	♥♥♥♥♥
CULTURE	♥♥♥♥♥
UNIQUE ACTIVITIES	♥♥♥♥♥

PROS

- At 1,800 meters, Chamois is recognized as one of the 'Pearls of the Alps' for its environmental sustainability
- Car-free town offering a peaceful and authentic alpine experience
- Features charming Corgnolaz hamlet with historic wood and stone buildings
- Saint Pantaléon Church offers historical significance and architectural interest
- Chamois ski resort provides over 16 km of pistes

CONS

- Limited accessibility as it can only be reached by helicopter or cableway



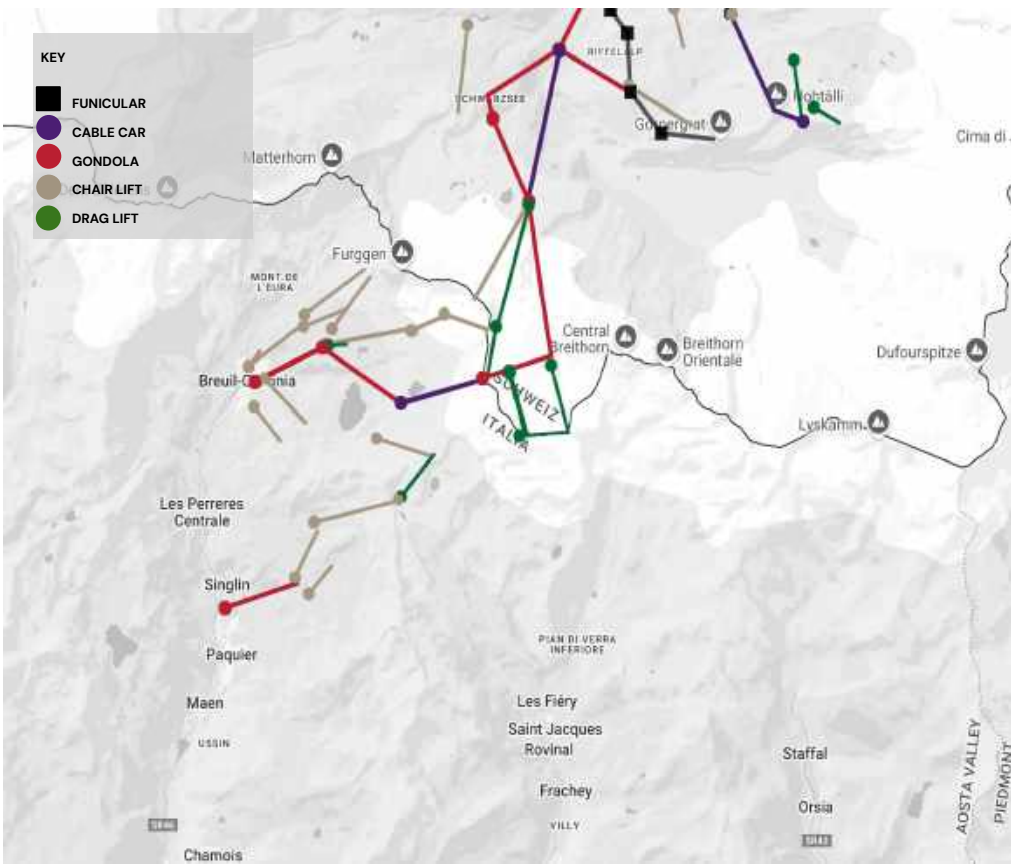
In the heart of Aosta Valley, home to the renowned Cervinia beneath the iconic Matterhorn, hides a carmaing cera-free village and ski resort Chamois. Close to it is Plateau Rosa glacier, linked to Zermatt, Switzerland. The wee resort Chamois and gentle Torgnon surrounded by breathtaking alpine vistas enhance Aosta Valley’s appeal.

**SUMMARY**

Length of Runs	18 km
Total Skiable Terrain	150 km
Longest Run	5 km
Elevation	1,800m – 3,500m
Average Snowfall	10+ metres
Snow Conditions	🔹🔹🔹🔹🔹

**LEVEL OF SKIING**

Beginners	🔹🔹🔹🔹🔹
Intermediate	🔹🔹🔹🔹🔹
Advanced	🔹🔹🔹🔹🔹
Experts	🔹🔹🔹🔹🔹
Extreme	🔹🔹🔹🔹🔹
Off-Piste	🔹🔹🔹🔹🔹
Tree-Skiing	🔹🔹🔹🔹🔹
Ski Area Overall	🔹🔹🔹🔹🔹





## CHAMOIS

- Offers 16 km of slopes
- Slopes are categorized as 1 km easy (13%) and 7 km intermediate (87%).
- No difficult slopes available
- Elevation ranges from 1,812 to 2,499 meters.
- Equipped with 6 ski lifts
- The hamlet of Chamois is the only Italian village that can't be accessed by car.



## BREUIL-CERVINIA

- At the foot of Monte Cervino and iconic Matterhorn offering stunning landscapes
- Longest ski season in Europe due to high altitude
- Ski areas linked with Zermatt, Switzerland for seamless cross-border skiing
- Ideal for families and groups
- Excellent piste for beginners and intermediates
- Hosts one of the world's most spectacular learn-to-ski areas
- Long ski season, including summer skiing on the Plateau Rosa Glacier
- Quiet atmosphere during weekdays
- Sector is exposed to blizzards, often resulting in lift closures during high winds.



## TORGON

- Ideal for seasoned skiers seeking a challenge
- Renowned Lagazuoi slope with a dramatic 4,265-foot drop
- Long, groomed runs
- Challenging off-piste terrain
- Includes a variety of restaurants, cafes and bars for refreshments and dining



## ON THE SLOPES

- Alpine Skiing
- Snowboarding
- Free Ride
- Snowkite
- Heli Skiing
- Plateau Rosa Glacier skiing



## IN THE RESORT

- Ski mountaineering
- Snowshoeing
- Cross-country skiing
- Off-piste skiing
- Pré-Saint-Didier Thermal Spa
- Dog sledding
- Ice skating
- Ice climbing
- Adventure snow parks



## DESTINATION EXCLUSIVE

- Hot Air Balloon Flights
- Chamoisic - international festival of experimental music, electronic and jazz in an exceptional natural environment. (summer)
- New Year's Eve torchlight procession
- The Taste of a Walk: along the path from Chamois to La Magdeleine, stalls display typical products, from crafts to food and wine. The market is enlivened by live music (summer)
- Summer skiing
- Panoramic helicopter flights
- Powered flight and gliding at Aeroclub Aosta





## APRÈS SKI

- Lino's Bar
- Super G
- Chez Pierin



## FINE DINING

- Wood 1\* Michelin | Modern, Creative (Breuil Cervinia)
- Le Grenier | Modern (Saint-Vincent)
- Le Bistrot | Modern, Creative
- La Chandelle | Modern
- Gina | Modern
- Paolo Griffa 1\* Michelin | Italian Contemporary, Creative



## NIGHTLIFE

- Bar at Hotel Hermitage
- Cabernet Voltaire
- Wet Industry Cocktail Bar
- Vineria Wine Note
- B63



## SHOPPING

- Al Duca D'Aosta (Aosta)
- Falconeri Cashmere (Aosta)
- The Double F (Cervinia)
- Mini Market Bazar
- ReMida Gioielli (Cervinia)
- Sabolo (Cervinia)



## CULTURE

- The Fenis Castle
- Castello Reale Di Sarre Regional
- The Lyskamm marmot at Regional Museum of Natural Sciences in the castle of Saint-Pierre
- Astronomical Observatory
- "Beck-Peccoz" Regional Museum of alpine fauna



CHAMOIS, AOSTA VALLEY



3 GUEST SUITES



6 GUESTS



Fireplace, Fitness Room, Hammam, Massage Room, Sauna, Spa Lounge, Wine Cellar, Jacuzzi Outdoor, Outdoor Dining, Mountain View



Chalet Cocoon Deluxe is a spectacular luxury rental embraced by awe-inspiring mountain vistas, peering into the purest expression of Italian Alpine beauty. This sleek twenty-first-century luxury Chalet features dollops of folkloric charm and old-world authenticity impart warmth into the residence, curating a dreamy Alpine hideaway.

[VIEW MORE](#)

**WEEKLY STAY**

**Starting at €40,000**

*\*Exclusive of Fees*



LVH

# CORTINA D'AMPEZZO

## ITALY



Nestled within the majestic Dolomites, a UNESCO World Heritage Site, Cortina d'Ampezzo is rightfully known as the "Queen of the Dolomites." This luxurious alpine haven caters to discerning travelers, offering a serene escape steeped in aristocratic heritage. Celebrated for hosting the 1956 Winter Olympics, Cortina boasts diverse ski terrains such as Tofana, Faloria-Cristallo, and Cinque Torri. As the host of the upcoming 2026 Winter Olympics, the buzz around this gorgeous resort town builds with each passing day.

AIRPORTS

INTERNATIONAL COMMERCIAL  
PRIVATE

Venice Marco Polo Airport (VCE/LIPZ) 120 km  
Venezia Marco Polo Airport FBO (VCE/LIPZ) 120km

RESORT QUALITIES

CHARM FACTOR	♥♥♥♥♥
NON-SKIER'S	♥♥♥♥♥
RESORT LAYOUT	♥♥♥♥♥
SHORT TRANSFER	♥♥♥♥♥
KID-FRIENDLY	♥♥♥♥♥
SLOPES	♥♥♥♥♥
APRÈS SKI	♥♥♥♥♥
FINE DINING	♥♥♥♥♥
NIGHTLIFE	♥♥♥♥♥
SHOPPING	♥♥♥♥♥
CULTURE	♥♥♥♥♥
UNIQUE ACTIVITIES	♥♥♥♥♥

PROS

- Stunning views and dramatic landscapes
- Vibrant après ski scene
- Superb mountain dining experiences with views
- High elevation ski terrain, mostly above 1,600m
- Second longest skiable vertical in the Dolomites
- Diverse on-piste trails for all skill levels
- Renowned intermediate ski runs with attractions
- Italy's best selection of advanced black piste
- Abundant challenging freeride terrain

CONS

- Inconsistent recent snow record
- Several separate ski areas not well-linked to the town with and not lift-connected
- Often sunny, which may limit snowfall



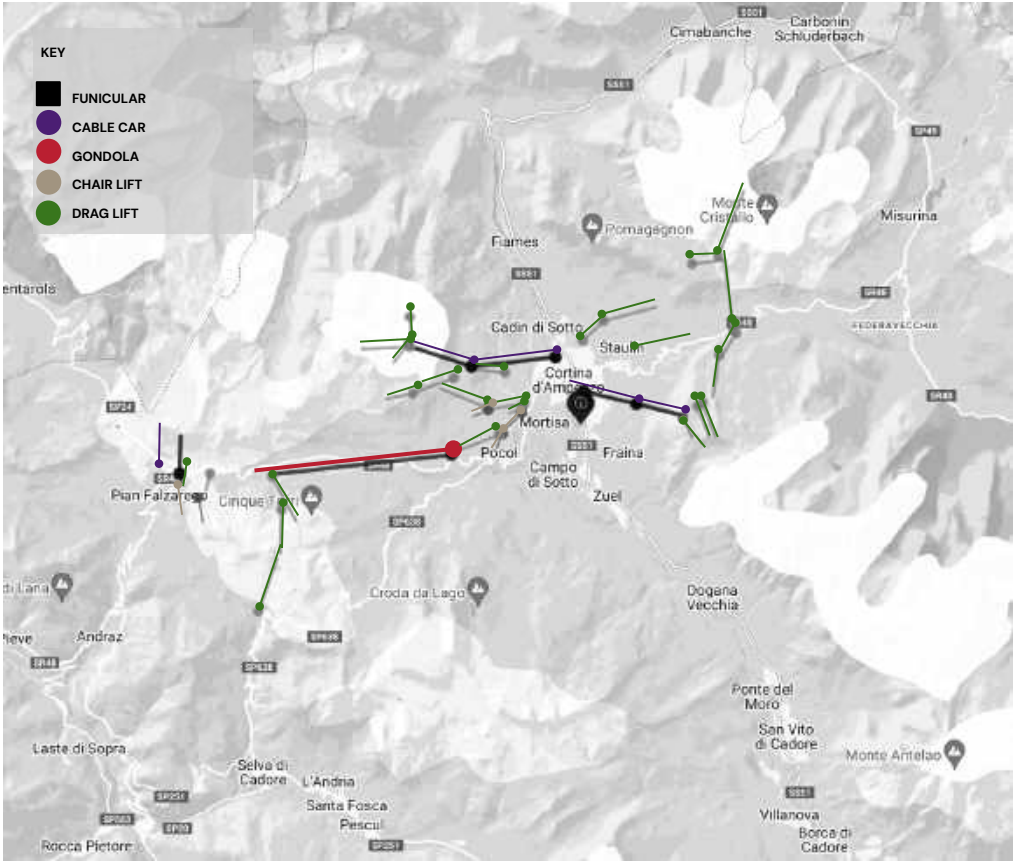
Cortina d'Ampezzo ski area, part of the expansive Dolomiti Superski, offers an unparalleled winter experience with a range of slopes and lifts catering to all skiing levels. Tofana challenges experts with thrilling runs, Faloria-Cristallo captivates intermediates with scenic red runs, and Cinque Torri provides gentle trails for families. Renowned for its expertly groomed pistes and expert-only couloirs, the region also boasts some of the most spectacular freeride areas, combining challenge and natural beauty.

SUMMARY

Length of Runs	120 km
Dolomiti Super Ski	1,200 km
Longest Run	7 km+
Elevation	1,220m - 2,830m
Average Snowfall	n/a
Snow Conditions	★★★★★

LEVEL OF SKIING

Beginners	★★★★★
Intermediate	★★★★★
Advanced	★★★★★
Experts	★★★★★
Extreme	★★★★★
Off-Piste	★★★★★
Tree-Skiing	★★★★★
Ski Area Overall	★★★★★





## SAN VITO - AURONZO - MISURINA

- San Vito ski area is nestled beneath the majestic Mount Marcora and Mount Antelao.
- Auronzo offers 6 trails with breathtaking panoramas of the Dolomites.
- Misurina features 4 trails and 2 lifts, providing stunning views of Cadini di Misurina and Lake Misurina.



## FALORIA - CRISTALLO

- Authentic Italian Alpine experience
- Over 62 miles of ski runs suitable for all skill levels
- Ample sunshine for a comfortable skiing experience
- Challenging black runs for advanced skiers
- Gentle blue runs for beginners



## LAGAZUOI - 5 TORRI

- Ideal for seasoned skiers seeking a challenge
- Renowned Lagazuoi slope with a dramatic 4,265-foot drop
- Long, groomed runs
- Challenging off-piste terrain
- Includes a variety of restaurants, cafes, and bars for refreshments and dining



## TOFANA - POCOL - SOCREPES

- Challenging steep slopes and stunning scenery
- Vast network of ski lifts and trails—over 75 miles
- Mix of adrenaline-pumping runs and panoramic views
- Steep black runs for advanced skiers
- Powder-filled tree skiing experiences
- Wide-open pistes



## FALZAREGO - CINQUE TORRI

- 50 miles of slopes with views of surrounding peaks
- Caters to skiers of all levels, from beginners to experts
- Well-groomed slopes
- Plenty of off-piste areas for adventurous skiers
- Variety of terrain, including blue runs for beginners and black runs for experts





## ON THE SLOPES

- Alpine Skiing
- Snowboarding
- Free Ride
- Snowkite
- Cross-Country Skiing



## IN THE RESORT

- Carriage & Sleigh Rides
- Snowmobiling
- Snowshoeing
- Mushing/ Dog Sledding
- Curling
- Ski Mountaineering
- Luxury Spas
- Fat Bikes
- Ice Skating



## DESTINATION EXCLUSIVE

- Brite Mobile Dining Experience—one-of-a-kind culinary adventure that "brings the kitchen to you."
- Misurina Lake Visit
- Helicopter Tour Over Glacial Lakes



## APRÉS SKI

- El Toulà
- Enoteca Baita Pie Tofana
- Pasticceria Lovat Cortina
- Chalet Tofane Pizzeria
- Rifugio Scoiattoli



## FINE DINING

- Tilia 1\* Michelin | Modern
- La Stua De Michil 1\* Michelin | Creative
- Sanbrite | Agricuisin, Italian
- Porcino 1\* Michelin | Alpine, Mediterranean
- L'osti | Modern



## NIGHTLIFE

- Enoteca Baita Fraina
- Enoteca Cortina Wine Bar "Da Gerry"
- Hotel Rosa Alpina Wine Bar
- Andi Wine Bar



## SHOPPING

- Corso Italia
- Gioiellerie Bartorelli
- Luca 1959 Alta Gioielleria
- Top Class
- La Cooperativa Di Cortina



## CULTURE

- Astronomical Observatory
- Church Of Saints Filippo and Giacomo
- Ethnographic Museum
- "Mario Rimoldi" Museum Of Modern Art
- Cinema-Teatro Eden



CORTINA , VIA MENARDI



6 GUEST SUITES



12 GUESTS



Bar, Fitness Room, Office, Walk-In Closets, Garden, Ski Walk To Lift



Chalet Geneva is an exquisite property in Cortina's revered Via Menardi area. This Italian Alpine luxury rental's exclusive positioning unveils outstanding mountain panoramas. Commanding views over the Passeggiate and the peaks of Mount Cristallo, Faloria, Cinque Torri, and Tofane peer into the heart of the Dolomites.

**VIEW MORE**

**WEEKLY STAY**

**Starting at €50,000**

*\*Exclusive of Fees*



L V H

# CRANS-MONTANA

## SWITZERLAND



TABLE OF CONTENTS

Beautiful Alpine settings envelop Crans Montana, situated high above the Rhone Valley, which boasts a high-end reputation. This luxurious destination blends sophistication with natural beauty, promising an upscale skiing experience with access to glacier skiing, stunning mountain views, sunny slopes, and an excellent gastronomic scene. Aside from fascinating skiing opportunities, the resort boasts excellent shopping opportunities and après ski on the mountain slopes, from state-of-the-art spas and gourmet dining to personalized services and designer boutiques.

AIRPORTS

INTERNATIONAL COMMERCIAL  
PRIVATE

Sion Airport (LSGS/SIR) 24.3 km  
Sion Airport FBO (LSGS/SIR) 24.3 km



RESORT QUALITIES

CHARM FACTOR	★★★★★
NON-SKIER	★★★★★
RESORT LAYOUT	★★★★★
SHORT TRANSFER	★★★★★
KID-FRIENDLY	★★★★★
SLOPES	★★★★★
APRÈS SKI	★★★★★
FINE DINING	★★★★★
NIGHTLIFE	★★★★★
SHOPPING	★★★★★
CULTURE	★★★★★
UNIQUE ACTIVITIES	★★★★★

PROS

- High elevation ski area with abundant snowfall
- Long skiable vertical
- Diverse piste and freeride terrain
- Minimal lift lines, even during peak times
- Off-piste options excellent, including tree skiing
- Second-best terrain park in Switzerland
- Luxury shopping

CONS

- Busy trail intersections near village ends
- Difficult access to gondolas for first-time visitors
- Long, flat sections on some trails, challenge for snowboarders
- Quiet après ski in village, lively on mountain
- Spread out villages lack a traditional alpine feel



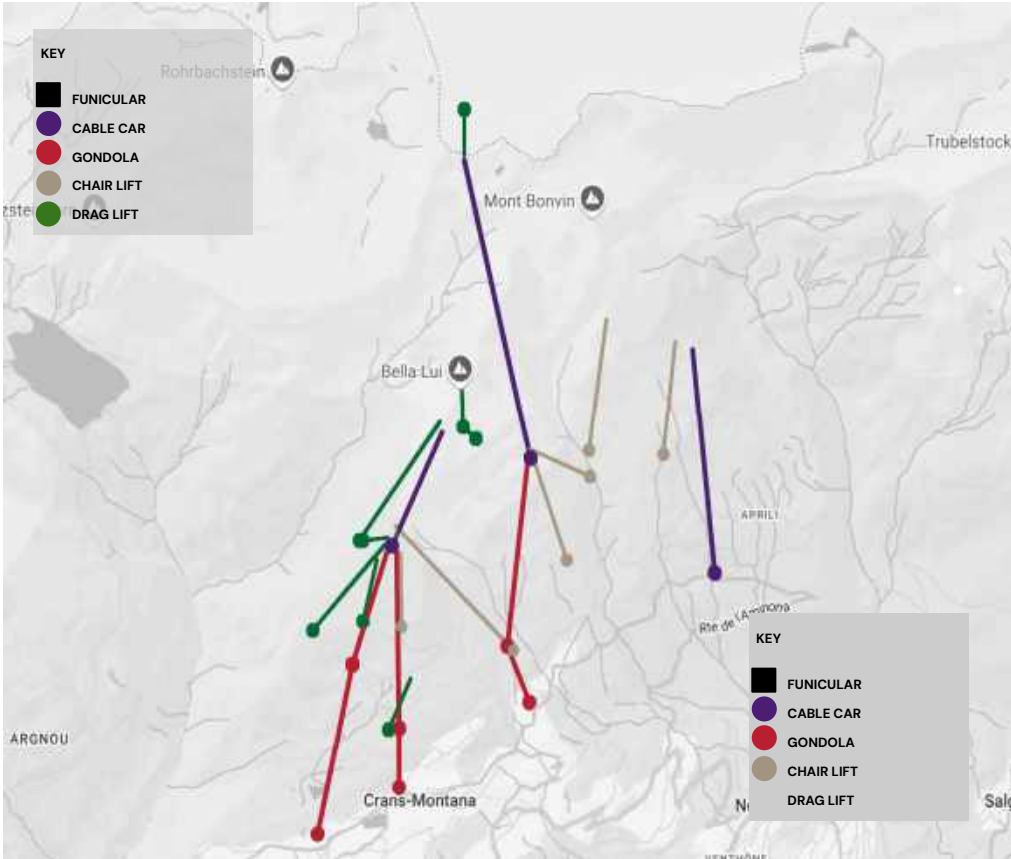
Crans-Montana boasts an extensive and varied skiing terrain with over 140 kilometers of impeccable slopes, making it a haven for skiers of all levels, especially intermediates who can enjoy a plethora of wide, long red and blue runs. Advanced skiers will find challenges on the World Cup pistes and extensive off-piste options. The modern, well-designed ski lift system ensures easy access to the trails, while the renowned terrain park, ranked second-best in Switzerland, promises an exhilarating experience amidst stunning alpine scenery.

SUMMARY

Length of Runs	140 km
Total Skiable Terrain	
Longest Run	12 km
Elevation	1,510m – 2,927m
Average Snowfall	8 metres
Snow Conditions	★★★★★

LEVEL OF SKIING

Beginners	★★★★★
Intermediate	★★★★★
Advanced	★★★★★
Experts	★★★★★
Extreme	★★★★★
Off-Piste	★★★★★
Tree-Skiing	★★★★★
Ski Area Overall	★★★★★







## AMINONA-SUR-SIERRE

- The main ski area is part of the Crans-Montana ski resort.
- Access via gondola lifts running from Crans and Montana directly to the ski area
- A range of après-ski activities, dining options, and ski schools for lessons
- Known for its sunny plateau, providing excellent skiing conditions and scenic views
- A comprehensive skiing experience with diverse slopes and modern facilities



## BARZETTES-MAROLIRÉS-VIOLETTES

- Part of the Crans-Montana ski area, connecting to the Plaine Morte, hosts unique experiences such as yoga and Tai Chi sessions at Cry d'Er.
- Features several dining options, including restaurants like Plaine Morte and Les Violettes
- Provides stunning views of the Alpine peaks



## PLAINE MORTE GLACIER

- Easily accessible from Crans-Montana via cable car
- Year-round cross-country skiing opportunities
- A360° panoramic view of the Alps, including iconic peaks like the Matterhorn and Mont Blanc
- Features a large lake at its eastern base, adding to its picturesque landscape
- Hosts unique experiences such as Tai Chi sessions and guided hikes
- Offers a restaurant at the summit for dining with a view



## CRANS-MERBÉ-CRY D'ER

- Cry d'Er is at an altitude of 2,200m
- A panoramic view of the Alps, including peaks like the Matterhorn and Mont Blanc
- Vibrant après-ski scene, especially during the Caprices Festival
- A variety of winter activities, including skiing and hiking
- A popular hiking route that descends from Cry d'Er to the center of Crans, with consistently beautiful views



## ON THE SLOPES

- Skiing
- Snowboarding
- Free Ride
- Heli-Skiing
- Snowkiting
- Night Skiing
- Snow Island with Magic Carpets and Button Lifts for Kids
- Snow Garden for beginners
- Plaine Morte Glacier Skiing



## IN THE RESORT

- E-Scootpark
- Snowshoeing
- Ski Mountaineering
- Luxury Spas
- Fat Biking
- Ice Skating
- Dog Sledding
- Paragliding
- Alpine Hiking
- Torchlit Descent
- Hot Air Ballooning
- Tobogganing
- Winter Hiking



## DESTINATION EXCLUSIVE

- Swiss Fondue Experience
- Heli Sightseeing
- Mini Golf At Centre Ycoor
- Paintball
- Family Forest Loop
- Plaine Morte Glacier Exploration
- Cheese-Making Workshop



## APRÈS SKI

- Zerodix
- The Crans Ambassador Spa
- Casino Circus
- Seven Burgers & Beers
- Wellness & Spa at Six Senses



## FINE DINING

- Le Mont Blanc 1\* Michelin | Modern French,
- L'ours
- 1\* Michelin | French
- Five | Lebanese
- Edo | Japanese, Sushi
- Kaizen | Japanese



## NIGHTLIFE

- Yuki Lounge Bar & Restaurant
- Monk'is
- Le Moon
- Les Alpes Bar
- Sewi Bar & Social Club



## SHOPPING

- Bucherer
- Rue Du Prado
- Bel-Air Fine Art
- The Boutique Sport
- Joaillerie De Crans



## CULTURE

- Castle Tour And Wine Tasting
- The Grand Lens Museum
- The Foundation Opale
- Cheese Making
- Train Museum





LENS, CRANS-MONTANA



10 GUEST SUITES



26 GUESTS



Bar, Hammam, Massage Room, Spa Lounge, Wine Storage, Jacuzzi Outdoor, Pool Outdoor Heated, Mountain View, Ski In / Ski Out



Ultima Crans Montana 1 is an extraordinary luxury chalet in the Plateau de Plan-Mayens area. The expansive living areas feature plush seating and sophisticated decor for seamless socializing. Exquisite outdoor spaces provide serene relaxation and entertainment, making this retreat an unparalleled high-altitude haven.

[VIEW MORE](#)

**WEEKLY STAY**

**Starting at €185,500**

*\*Exclusive of Fees*

LVH

# GSTAAD SWITZERLAND

TABLE OF CONTENTS



Gstaad is renowned for sublime Alpine vistas and a myriad of leisurely opportunities. The charming main street of this car-free resort is dotted with chic boutiques and elegant galleries. Gstaad incorporates opulence and rustic charm into this destination's already luxurious traditional village architecture. This picturesque Saan Valley village invites skiers and non-skiers to enjoy an idyllic luxury Swiss holiday.

AIRPORTS

INTERNATIONAL COMMERCIAL  
PRIVATE

Bern Airport (BRN/LSZB) 95 km  
Gstaad Saanen Airport (QYK/LSGKI) 6 km

RESORT QUALITIES

CHARM FACTOR	★★★★★
NON-SKIERERS	★★★★★
RESORT LAYOUT	★★★★★
SHORT TRANSFER	★★★★★
KID-FRIENDLY	★★★★★
SLOPES	★★★★★
APRÈS SKI	★★★★★
FINE DINING	★★★★★
NIGHTLIFE	★★★★★
SHOPPING	★★★★★
CULTURE	★★★★★
UNIQUE ACTIVITIES	★★★★★

PROS

- Charming landscape with privately owned chalets
- It's a car-free resort
- Main street lined with smart shops, cafes, galleries and traditional village architecture
- Combines luxury with a laid-back rural culture
- Numerous facilities for non-skiers
- Largest ski area above Saanenmöser & Schönried
- Chalets in Gstaad are luxurious and expensive,
- High-elevation glacier skiing

CONS

- There are few challenging runs for experts
- Due to its rather low altitude the season is shorter than for higher ski resorts
- No direct ski lift access from central Gstaad





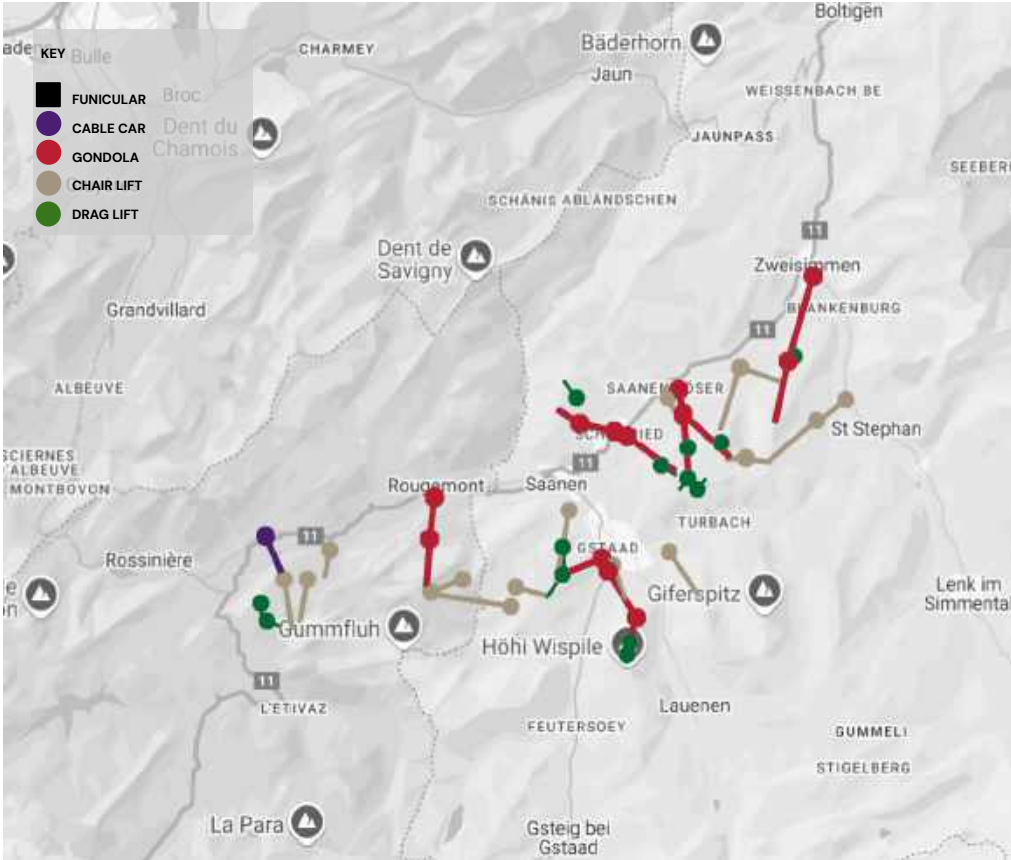
Gstaad's ski slopes offer an enchanting blend of discovery and diversity across six distinct areas spanning 200 kilometers of ski trails. These regions traverse majestic mountain peaks and boast the longest run and the highest skiing point alongside varied terrain of alpine bowls, steeps, and tree skiing. The snow in Gstaad promises an unforgettable adventure with freeride opportunities and sunlit descents.

SUMMARY

Length of Runs	89.9 km
Total Skiable Terrain	250 km
Longest Run	10 km+
Elevation	948m – 3,016m
Average Snowfall	n/a
Snow Conditions	★★★★★

LEVEL OF SKIING

Beginners	★★★★★
Intermediate	★★★★★
Advanced	★★★★★
Experts	★★★★★
Extreme	★★★★★
Off-Piste	★★★★★
Tree-Skiing	★★★★★
Ski Area Overall	★★★★★





## GSTAAD-SAANEN-ROUGEMONT

- Classic Swiss countryside and numerous villages
- Efficient lift system
- Access to 200 km of trails across six ski areas
- Known for low crowds
- Fun off-piste terrain including trees, steeps, and bowls
- Excellent après-ski options
- Terrain mostly below 2,000m elevation, with snow quality varying
- No direct ski lift access from central Gstaad
- Linked by ski bus and train



## GLACIER 3000

- Spans three cantons: Vaud, Bern and Valais
- A seven-month ski season
- Steep, off-piste freeride powder descents
- Snow-sure resort
- Classic high-alpine off-piste routes and quality trails for beginners and advanced skiers
- Groomed, long runs – 8 km
- Limited on-piste trails for intermediate skiers and snowboarders
- No valley trail for novices or intermediates, requiring cable car downloads



## VILLARS-GRYON-DIABLERETS

- Combines authentic Swiss Alps villages with a wide network of lifts and ski trails
- Quality on-piste trails for beginners and intermediates
- Numerous excellent mountain restaurants and bars
- Most ski terrain is below 2,000m altitude
- Limited advanced on-piste terrain
- Best freeride terrain is in the Villars sector
- Terrain includes steep alpine, open forest, and classic Swiss rural landscapes



## SAANENMOSER AND SCHONRIED

- Known for their picturesque landscapes and charming Swiss village atmosphere
- A variety of ski runs suitable for beginners and intermediate skiers
- Well-groomed scenic pistes
- Part of the larger Gstaad Mountain Rides ski area
- Excellent for family-friendly skiing
- Cross-country skiing trails and winter hiking
- Equipped with modern lift systems
- Cozy mountain restaurants and après-ski options



## ON THE SLOPES

- Alpine Skiing
- Snowboarding
- Free Ride
- Snowkite
- Glacier 3000 Skiing



## IN THE RESORT

- Cross Country Skiing
- Dog Sledding
- Carriage Rides
- Tobogganing
- Curling
- Snowbiking
- Winter Hiking
- Saltwater Spa
- Snowshoeing
- Natural Ice Rinks In Schönried & Saanenmöser
- Sleigh Rides
- Hot Air Balloon Rides
- Paragliding Solo Or Tandem Flights & Ice Climbing
- Suspension Bridge Peak Walk



## DESTINATION EXCLUSIVE

- Glacier 3000 visit
- Golden Pass | Panoramic & Belle Époque
- Peak Walk By Tissot
- Igloo Dorf
- Fondue Caquelon
- Heli Hike Or Heli Qi-Yoga
- Skiing With World Champion Mike Von Grunigen





## APRÉS SKI

- La Cave At Huus | Bar Huus Bar
- Bro's Cafe Bar & Lounge
- The Yurt | Bar



## FINE DINING

- Sommet By Martin Göshel 1\* Michelin | Modern
- Gildo's Ristorante | Italian, Vegetarian
- La Bagatelle | Classic French
- Megu | Japanese
- Ultima Gstaad Restaurant | Peruvian, Japanese Fusion



## NIGHTLIFE

- 1One Million Stars Bar By Swarovski | Bar
- The Bar At The Bellevue Hotel
- Grengo Nightclub
- Japanese Whisky Bar At Alpina
- Stall-Bar Chlösterli



## SHOPPING

- Gstaad Promenade
- Lorenz Bach
- Marina Anouilh
- Hermès
- Gstaad Promenade Graff



## CULTURE

- Zentrum Paul Klee
- Ballenberg Open-Air Museum
- Menuhin Center Saanen
- Tarmak 22
- Patricia Low Contemporary



GSTAAD, GSTAAD



16 GUEST SUITES



32 GUESTS



Bar, Dining Area, Fireplace, Private Elevator, Mountain View, Ski Walk To Lift



Ultima Gstaad is a spectacular boutique hotel and Switzerland's most exclusive luxury hideaway. Interiors present a dazzling fusion of Chalet romanticism, Courchevel authenticity, and contemporary elegance. Rustic timber envelops the interiors, contrasting sleek LED lighting and exquisite statement pieces teeming with timeless cachet.

**VIEW MORE**

**WEEKLY STAY**

**Starting at €185,500**

*\*Exclusive of Fees*





LVH

# ST. MORITZ SWITZERLAND

[TABLE OF CONTENTS](#)



St Moritz in Switzerland is the queen of European ski resorts. Old-world Swiss charm meets high-culture refinement in the world's most cosmopolitan resort town. St Moritz has been a premier holiday destination for centuries, renowned for its style, elegance and class. It's a place steeped in history: the birthplace of alpine winter holidays in 1864 and home to two Winter Olympic Games. Today, St Moritz is the world's ultimate mountain holiday experience.

AIRPORTS

INTERNATIONAL COMMERCIAL  
PRIVATE

Bergamo (BGY / LIME) 161 km  
Engadin Airport (SMV/LSZS) 7 km

RESORT QUALITIES

CHARM FACTOR	♥♥♥♥♥
NON-SKIER'S	♥♥♥♥♥
RESORT LAYOUT	♥♥♥♥♥
SHORT TRANSFER	♥♥♥♥♥
KID-FRIENDLY	♥♥♥♥♥
SLOPES	♥♥♥♥♥
APRÈS SKI	♥♥♥♥♥
FINE DINING	♥♥♥♥♥
NIGHTLIFE	♥♥♥♥♥
SHOPPING	♥♥♥♥♥
CULTURE	♥♥♥♥♥
UNIQUE ACTIVITIES	♥♥♥♥♥

PROS

- Wonderful sprawling scenery
- St Moritz's best learn-to-ski areas
- Good après ski on the mountain
- First-rate restaurant food
- World-class non-ski activities
- Quiet slopes before 10am.
- All terrain is south-facing and sunny
- Offers diverse skiing experiences with modern lifts and sunny open terrain
- Best place for children and beginners, with a variety of learn-to-ski areas

CONS

- Lacking lovely village atmosphere
- Hard access to some slopes



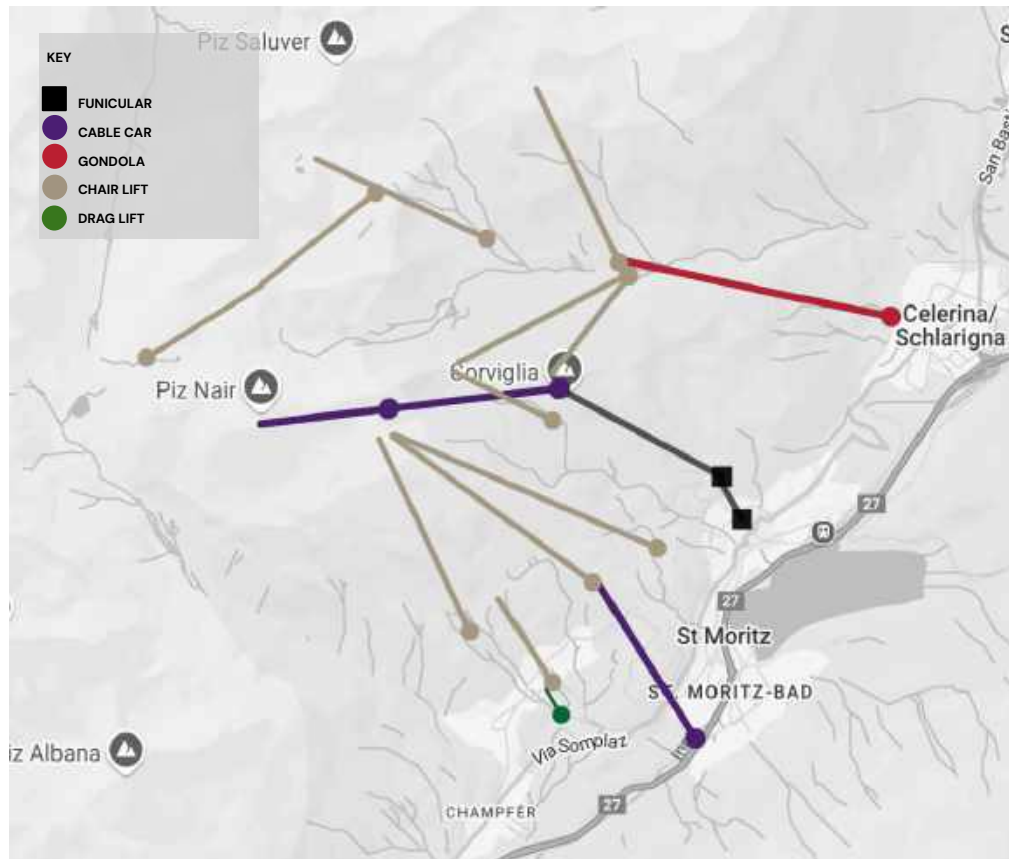
The charms of St Moritz – the "miniature city" of the Alps – are second to none. Far more than a holiday resort, this gorgeous town in the Engadin Valley laid the groundwork for alpine tourism, its UNESCO-recognized beauty offering the backdrop to two Winter Olympic games. A bastion of elite living since the 19th century, St. Moritz has woven itself gradually into the cultural zeitgeist from the films of James Bond to Alfred Hitchcock.

## SUMMARY

Length of Runs	155 km (Corviglia only)
Total Skiable Terrain	312 km
Longest Run	7.5 km+
Elevation	1,720m – 3,303m
Average Snowfall	8 to 10 metres
Snow Conditions	★★★★★

## LEVEL OF SKIING

Beginners	★★★★★
Intermediate	★★★★★
Advanced	★★★★★
Experts	★★★★★
Extreme	★★★★★
Off-Piste	★★★★★
Tree-Skiing	★★★★★
Ski Area Overall	★★★★★





## THE CORVIGLIA

- At 2,450m altitude it is considered one of Switzerland's top skiing destinations.
- A piste skiers paradise directly above St Moritz
- Challenging pistes for advanced skiers, snowboarders, and beginner runs that everyone can enjoy
- Over 155 km of piste trails and 1,337m of vertical
- Linked to Corvatsch and Diavolezza Lagalb
- Superb, perfectly groomed intermediate piste trails
- Modern lifts with no lift lines
- Excellent off-piste freeride



## CORVATSCH

- A total of 80 km of slopes with spectacular views and luxury amenities
- Direct access to the mountain and an adrenaline-charged black run
- The ski area offers excellent snow quality
- More terrain diversity than in Corviglia



## THE DIAVOLEZZA

- Perched 3,000 meters above sea level
- An awe-inspiring view of the surrounding mountains
- Family-friendly ski destination with slopes and runs suitable for all skill levels
- A terrain park with ramps and rails for snowboarders



## DIAVOLEZZA-LAGALB

- Diavolezza-Lagalb is set above 2000m elevation.
- The incredible terrain offers quality snow, sensational off-piste and freeride opportunities.
- The exhilarating 10 km+ long valley run feels like a heli-ski experience.





## ON THE SLOPES

- Alpine Skiing
- Night Skiing
- Snowboarding
- Free Ride
- Heli-Skiing
- Snow Kiting
- Torchlight Descent
- Diavolezza Glacier Skiing



## IN THE RESORT

- Sleigh Rides
- Fat Biking
- Winter Fishing
- Yoga On Snow
- Ski Touring
- Cross-Country Skiing
- Private Snowshoeing
- Black Ice Skating
- Dog Sledding
- Sledding
- Natural Ice Bobsleigh
- Curling



## DESTINATION EXCLUSIVE

- Driving On Ice
- The St Moritz Snow Golf Days
- Ice Bath In Lake St Moritz
- Moritz Ville Kids Club
- Parc Alpine Rope Park
- Ibex Promenade
- Zerne National Park Centre
- Schellenursli Trail
- Glacier Express Train Ride



## APRÉS SKI

- Paradiso
- Sternbar Marguns
- Glünetta
- Luxury Spa at Kempinski
- Alpina Hütte



## FINE DINING

- Ecco On Snow  
2\* Michelin | Creative
- Talvo By Dalsass  
1\* Michelin | Mediterranean
- Restaurant Cà D'oro  
1\* Michelin | Mediterranean
- Mono Restaurant | Italian, Swiss
- La Coupole-Matsuhisa | Japanese, Peruvian



## NIGHTLIFE

- Renaissance Bar
- Balthazar
- Vic's Bar
- The Devil's Place
- Kulm Country Club Bar



## SHOPPING

- Palace Galerie
- Duca Di San Giusto  
Cashmere
- Gubelin Jewellery
- The Wega Bookstore
- Cashmere House Lamm



## CULTURE

- Nietzsche House
- Segantini Museum
- Hauser & Wirth
- L'atelier Gian Giovanoli
- Bel Air Fine Art



SUVRETTA, ST. MORITZ



6 GUEST SUITES



12 GUESTS



Fitness Room, Hammam, Massage Room, Pool Indoor, Private Elevator, Spa Lounge, Wine Storage, Mountain View, Ski Walk To Lift



Chalet Montiani is a luxurious mountain retreat just five minutes from the center of St. Moritz and the Corviglia ski area. The chalet blends rustic charm and contemporary elegance with interiors featuring vaulted ceilings, floor-to-ceiling glass, and a custom cylindrical fireplace. Scandinavian furnishings add warmth and comfort.

**VIEW MORE**

**WEEKLY STAY**

**Starting at €127,000**

*\*Exclusive of Fees*



LVH

# VERBIER SWITZERLAND

Verbier rests in the heart of the Bagnes Valley in the southern Swiss Alps, near the borders of France and Italy. Renowned as one of the most spectacularly situated ski resorts in the Alps, it offers world-class skiing and enchanting chalets. This stunning and entertaining resort—part of the prestigious 4 Vallées—the largest ski area entirely within Switzerland—boasts expansive skiing terrain with almost limitless on- and off-piste opportunities. Nestled amidst the majestic Swiss Alps, Verbier delivers a captivating blend of exhilarating adventure and alpine charm.



AIRPORTS

INTERNATIONAL COMMERCIAL  
PRIVATE

Sion Airport (LSGS/SIR) 54 km  
Sion Airport FBO (LSGS/SIR) 54 km

RESORT QUALITIES

CHARM FACTOR	★★★★★
NON-SKIER'S	★★★★★
RESORT LAYOUT	★★★★★
SHORT TRANSFER	★★★★★
KID-FRIENDLY	★★★★★
SLOPES	★★★★★
APRÈS SKI	★★★★★
FINE DINING	★★★★★
NIGHTLIFE	★★★★★
SHOPPING	★★★★★
CULTURE	★★★★★
UNIQUE ACTIVITIES	★★★★★

PROS

- Charming village atmosphere
- Elevations of up to 3,330 meters offer superb ski experiences
- Provides glorious views of iconic alpine peaks
- Sensational lift-served freeride terrain
- Interlinked with 4 Vallees for diverse on-piste ski
- Numerous ski-in ski-out chalets
- Switzerland's best après ski and nightlife
- Quality heliskiing available
- Easily accessed backcountry ski options

CONS

- Limited skiing opportunities for beginners
- Busy on powder days and weekends
- Mont Fort area requires a 4 Vallees pass





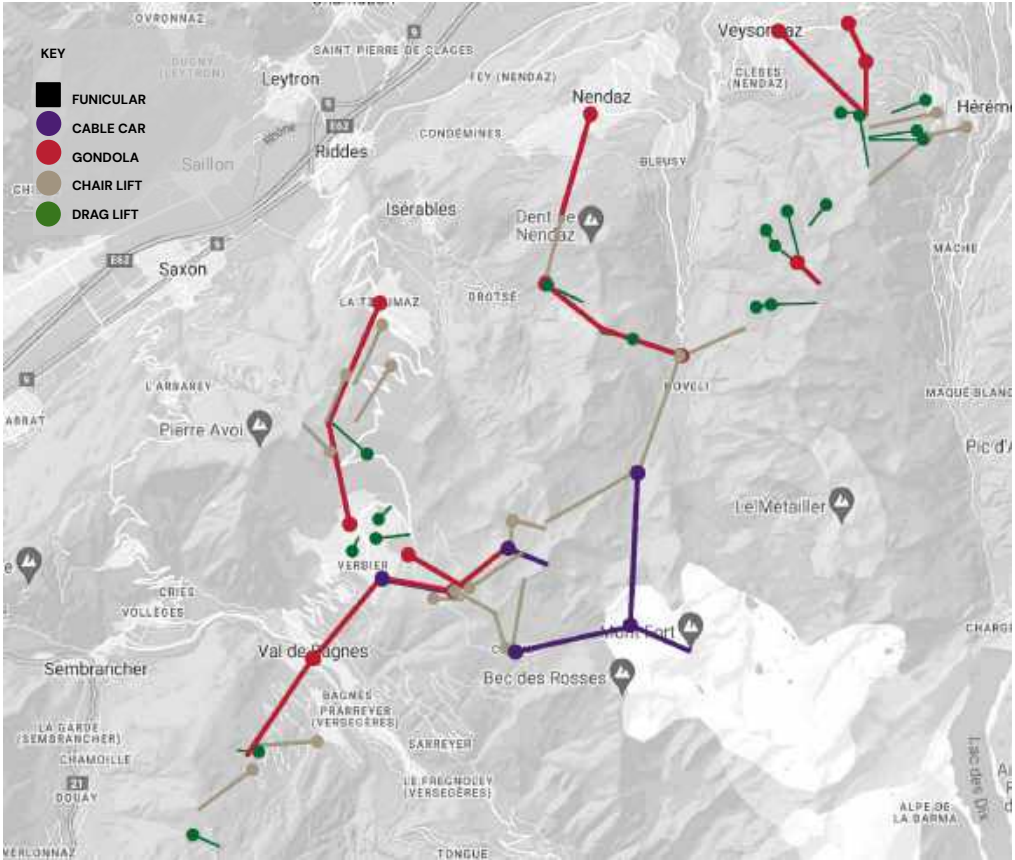
Verbier is on everyone's luxury travel list, with more than 250 kilometers of ski runs, luxury chalets, Michelin-starred eateries, and ultra-high-end fashion outlets attracting premier clientele. Its blazing white powder and decadent apres-ski experiences are unrivaled. Verbier is a much-favored ski weekend destination in the center of the 4 Vallées, giving way to a vast ski area with exciting terrain to thrill all skiers and boarders. One of the largest lift-linked areas in the world, Verbier offers skiers access to 412 kilometers of downhill skiing on 205 pistes.

SUMMARY

Length of Runs	N/A
Total Skiable Terrain	410 km (4 Valleys)
Longest Run	8 km+
Elevation	1,821m – 3,330m
Average Snowfall	7 to 10 metres
Snow Conditions	★★★★★

LEVEL OF SKIING

Beginners	★★★★★
Intermediate	★★★★★
Advanced	★★★★★
Experts	★★★★★
Extreme	★★★★★
Off-Piste	★★★★★
Tree-Skiing	★★★★★
Ski Area Overall	★★★★★







## THE SAVOLEYRES /LA TZOUMAZ

- The Verbier village side has sunny open pistes great for beginners and lower intermediates.
- In the shaded side down to La Tzoumaz there are better snow-quality trails.
- It is great in poor weather and when the snow has degraded on Verbier's south-facing slopes.
- Le Nord chair lift provides a short but sweet, moderately steep ridgeline speckled with trees.



## CHASSOURE- TORTIN AND MT GELE

- Savoleyres is ideal for beginners and intermediates with plenty of easy slopes and wide runs.
- South-facing orientation of the runs
- Chassoure-Tortin and Mt Gele, a mountain with no marked pistes, perfect for experts seeking challenging ski terrain



## THE MONT FORT

- The Mont Fort sector is part of the 4 Vallees interlinked ski area.
- The terrain is mainly off-piste freeride and advanced routes.
- One major intermediate trail links back into Verbier
- The Mont Fort sector of the 4 Vallees ski area offers the largest array of easily reached advanced and expert terrain of any ski resort in the Alps.



## BRUSON

- The lower Bruson ski area is across the valley via gondola from Le Chable.
- Bruson ski area is a lovely little tree-lined ski area situated opposite Verbier in the Val de Bagnes.
- The skiable vertical on the pistes is around 620 meters (1,600 meters to 2,220 meters).



## LES ESSERTS

- The largest of the beginner ski areas in Verbier (with one drag lift and two magic carpets at your disposal)
- With its short, gentle slopes, Les Esserts is undoubtedly the most popular spot for beginner skiers and families.
- Home to the longest magic carpet in Switzerland



## ON THE SLOPES

- Alpine Skiing
- Night Skiing
- Snowboarding
- Free Ride
- Heli-Skiing
- Snow Kiting
- Mont Fort Glacier Skiing



## IN THE RESORT

- Sleigh Rides
- Fat Biking
- Winter Fishing
- Yoga On Snow
- Ski Touring
- Cross-Country Skiing
- Private Snowshoeing
- Black Ice Skating
- Dog Sledding
- Sledding
- Natural Ice Bobsleigh
- Curling



## DESTINATION EXCLUSIVE

- Driving On Ice
- The St Moritz Snow Golf Days
- Ice Bath In Lake St Moritz
- Moritz Ville Kids Club
- Parc Alpine Rope Park
- Ibex Promenade
- Zerne National Park Centre
- Schellenursli Trail



## APRÈS SKI

- Carve Sushi Bar
- Ice Cube Verbier
- Pub Mont Fort
- Igloo Du Mont Fort
- Le Mouton Noir



## FINE DINING

- La Table D'adrien  
1\* Michelin | Contemporary
- Frenchie Verbier | French
- Le Grenier | French
- Le Rouge | French
- La Cordée | French



## NIGHTLIFE

- Le Crock No Name | Bar
- W Living Room | Lounge Bar
- Le Farinet | Lounge Bar & Night Club
- Monoski Klub | Night Club
- The Farm Club | Night Club



## SHOPPING

- La Galerie Du Chocolat | Chocolaterie
- Notshy Verbier
- Zero Verbier
- Moncler Grenoble
- Zadig & Voltaire



## CULTURE

- The Bagnes Museum
- The Espace Alpin (Alpine Space)
- Land Art/ Michael Heizer
- May Sky Gallery
- Fondation Gianadda





CENTER, VERBIER



9 GUEST SUITES



18 GUESTS



Bowling Alley, Casino Room, Cinema Room, Hammam, Massage Room, Pool Indoor, Spa Lounge, Wine Cellar, Jacuzzi Outdoor



Chalet Marmotte is a grand Alpine retreat, boasting breathtaking mountain views and blending rustic charm with high-fashion elegance. Airy common areas feature timber accents, floor-to-ceiling glass, and stylish lighting. Spanning two chalets connected by an exterior path, it delivers an unmatched luxury experience in the Swiss Alps.

[VIEW MORE](#)

**WEEKLY STAY**

**Starting at €349,500**

*\*Exclusive of Fees*

LVH

# ZERMATT SWITZERLAND



Zermatt epitomizes skiing excellence with its expansive terrain and endless intermediate runs. Celebrated for its breathtaking scenery, the resort exudes traditional European charm, with a festive atmosphere in its meticulously preserved old town and cobblestone streets. Its allure dates back to the late 18th century when British mountaineers brought it into prominence. Popular among British tourists, Zermatt combines heritage with modern luxury in a car-free setting. With a state-of-the-art lift infrastructure and over 80 catered chalets Zermatt brings glamour to family ski vacation, inviting skiers to indulge in luxuries amidst breathtaking alpine scenery.

## AIRPORTS

INTERNATIONAL COMMERCIAL  
PRIVATE

Sion Airport (LSGS/SIR) 80 km  
Sion Airport FBO (LSGS/SIR) 80 km

## RESORT QUALITIES

CHARM FACTOR	♥♥♥♥♥♥♥♥
NON-SKIERS	♥♥♥♥♥♥♥♥
RESORT LAYOUT	♥♥♥♥♥♥♥♥
SHORT TRANSFER	♥♥♥♥♥♥♥♥
KID-FRIENDLY	♥♥♥♥♥♥♥♥
SLOPES	♥♥♥♥♥♥♥♥
APRÈS SKI	♥♥♥♥♥♥♥♥
FINE DINING	♥♥♥♥♥♥♥♥
NIGHTLIFE	♥♥♥♥♥♥♥♥
SHOPPING	♥♥♥♥♥♥♥♥
CULTURE	♥♥♥♥♥♥♥♥
UNIQUE ACTIVITIES	♥♥♥♥♥♥♥♥

## PROS

- Enchanting alpine setting
- Renowned on-mountain restaurants & vibrant nightlife
- Plenty of non-ski activities for diverse interests
- Massive skiable vertical of 2,200m
- Long, cruising runs for snowboarders
- Superb off-piste freeride terrain
- High-alpine backcountry ski touring
- High altitude, northerly aspect, and glacier
- Modern and efficient lift system

## CONS

- Sprawling town layout-distant ski lifts
- Lift queues can form during peak periods
- High winds may close upper glacier lifts
- Limited terrain for beginners





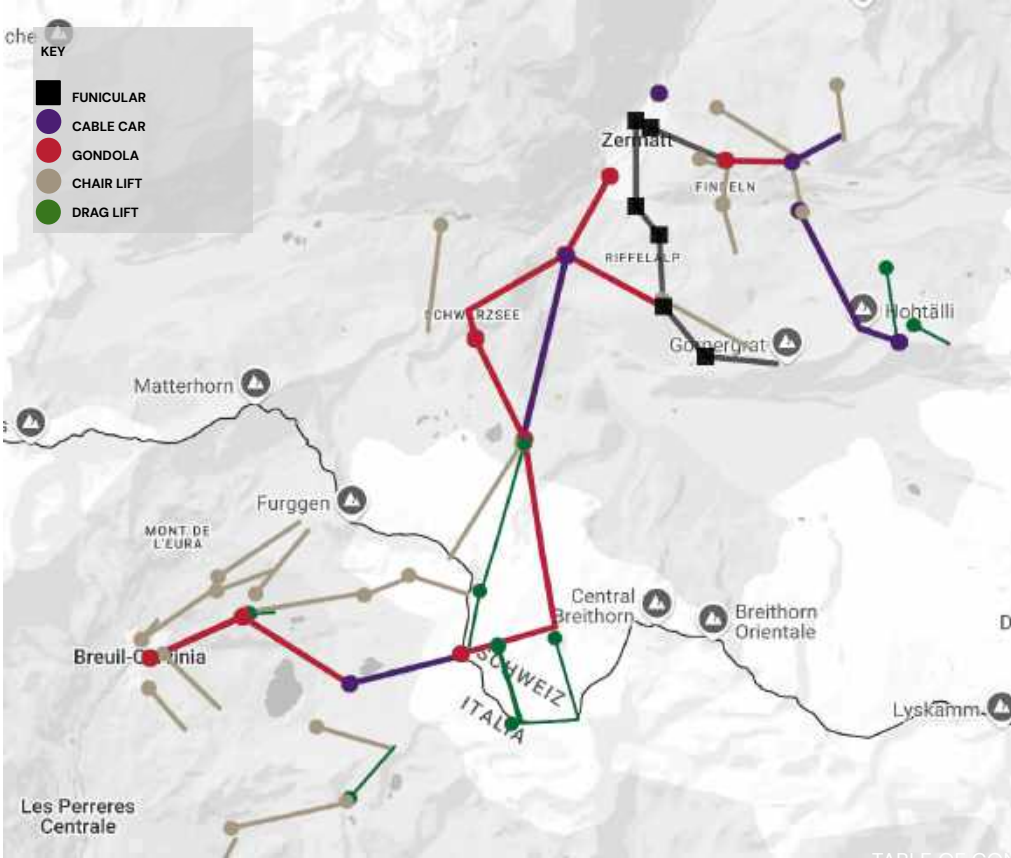
Zermatt's vast skiing and snowboarding terrain offers 210 kilometers of groomed pistes and freeride areas. Reach the slopes seamlessly with modern lifts, including funiculars, cable cars, chairlifts, and gondolas. The impressive 16-kilometer descent ensures a thrilling experience catering to intermediate skiers. Ski trails for advanced and novice skiers are limited; however, you can explore expansive off-piste areas with a guide.

SUMMARY

Length of Runs	210 km (Zermatt only)
Total Skiable Terrain	360 km (with Cervinia)
Longest Run	20 km
Elevation	1,620m - 3,899m
Average Snowfall	10+ metres
Snow Conditions	★★★★★

LEVEL OF SKIING

Beginners	★★★★★
Intermediate	★★★★★
Advanced	★★★★★
Experts	★★★★★
Extreme	★★★★★
Off-Piste	★★★★★
Tree-Skiing	★★★★★
Ski Area Overall	★★★★★





## SUNNEGGA-ROTHORN

- Boasts stunning views of the Matterhorn
- The Kumme piste, at the top of the Rothorn, is one of the favorite ones in the Alps.
- The wild and beautiful five-kilometer red run plunges off the top of the Rothorn.
- Offers terrain for all ability levels
- Includes options for tree skiing
- Home to some of the best mountain restaurants, including Chez Vrony



## GORNERGRAT-STOCKHORN

- An intermediate's paradise
- Experts may challenge themselves on Triftji—home to some of the most epic bumps in the Alps
- For mogul connoisseurs, this is the stuff of dreams.
- Gornergrat-Stockhorn offers a wide range of terrain options.
- Spectacular beginner and intermediate cruising slopes
- Stockhorn is known for its big vertical freeride terrain.
- The Rote Nase cable car provides access to exciting off-piste skiing, offering a thrilling yet approachable experience.



## KLEIN MATTERHORN-SCHWARZSEE

- Zermatt's largest ski area with its cross border links to Cervinia
- The glacier area at the top is fabulously scenic and offers an angular view of the Matterhorn.
- These are the highest pistes in the Alps where it is possible to ski all year.
- Features a massive vertical drop of 2,279 meters back to town
- Boasts largely north-facing slopes, ensuring reliable snow conditions.
- The Hirli chairlift area is a favored spot among visitors.



## ON THE SLOPES

- Alpine Skiing
- Snowboarding
- Free Ride
- Heli-Skiing
- Cross-border skiing
- Matterhorn Ski Safari
- Moonlit Skiing
- Matterhorn & Klein Matterhorn Glacier Paradise Skiing



## IN THE RESORT

- Sleigh Rides
- Winter Fishing
- Snowshoeing
- Tobogganing
- Fat Biking
- Nighttime Tobogganing
- Dog Sledding



## DESTINATION EXCLUSIVE

- Ice cave exploration
- Glacier Palace Visit
- Zermatt Unplugged
- Taste Of Zermatt
- Zermatt Music Festival & Academy
- Zermatt / Cervinia World Cup
- The Horu Trophy
- Shepherd's Festival And Wollli's Birthday
- Forest Fun Park
- Marmots' Playground & Hiking Trail





## APRÈS SKI

- Iglu Dorf As Apres Ski
- Ferdinand @ Cervo | Chalet Bar
- Papperla Pub
- Cervo Bar Lounge | Chalet Bar
- Hennu Stall



## FINE DINING

- Ristorante Capri  
1\* Michelin| Italian
- After Seven  
1\* Michelin | Creative
- Alex Grill Restaurant | Valais Haute Cuisine
- Aroleid Restaurant | Creative World Cuisine
- La Muña | Peruvian, Fusion



## NIGHTLIFE

- The Alex Lounge | Bar & Fumoir
- Chämi Bar Fireplace | Cocktail Bar
- Broken Bar Disco | Club
- Pink | Live Music Club
- Loft Club | Nightclub



## SHOPPING

- Hublot
- Boîte À Chocolat
- Alexander Walke Ag
- Meringue – Alpine Concept Store
- Horlogerie Schindler



## CULTURE

- Matterhorn Museum
- Peak Collection
- The Art Gallery Zermatt
- Vernissage Entertainment & Cinema



ZERMATT , ZERMATT



5 GUEST SUITES



10 GUESTS



Fireplace, Hammam, Jacuzzi Indoor  
Massage Room, Private Elevator  
Sauna, Ski Room, Smart Home,  
Outdoor, Jacuzzi, Alfresco Kitchen



Chalet Zermatt Peak is a  
spellbinding estate redefining  
21st-century Swiss Alpine  
opulence. Secluded and serene,  
yet moments away from the bustle  
of the resort village—this estate  
peers into the purest distillation of  
Swiss Alpine splendor from its  
authoritative perch.

**VIEW MORE**

**WEEKLY STAY**

**Starting at €122,500**

*\*Exclusive of Fees*



LVH

CURATORS OF  
IMMEASURABLE  
MOMENTS



GLOBAL HQ  
505 Fifth Avenue, 15th Floor  
New York, NY 10017, USA

LVHGLOBAL.COM  
+1-212-244-4001  
BOOKING@LVHGLOBAL.COM

Version 2024-10-28 V1.3